



# The Pastfinder



VOLUME 36 ISSUE 2

<http://ashlandohiogenealogy.org>

APR, MAY, JUN 2017

## 2017 Chapter Officers / Committee Members

- President: Vacant
- Vice-President: Brian HARTZELL
- Recording Secretary: Vacant
- Treasurer: Patricia DEANE
- Corresponding Secretary:  
Deanna APPLGATE
- Senior Trustee: Holly TAYLOR
- Intermediate Trustee: Virginia FEIBER
- Junior Trustee: Terry HAUN
- Librarian: Karen HISSONG
- Newsletter Editor: Terry HAUN

\* \* \* \* \*

**As a chapter member, please consider volunteering as a committee member or elected officer next election. This helps support the society as a whole. We want your input. (Check the By-laws under the chapter section of our website for more details.)**

## INSIDE THIS ISSUE:

Mable BERRA, Venus of Vaudeville	17-19
Judge William OSBORN	20
Local Obits	21
SELBY Family Reunion	22
1902-03 Births & Deaths	23-24
HEIFFNER Family & Reunion	25
Reunions - in Past	26
1839 Wedding Memories	27
Mary BRIDGER FREER	
Upcoming Reunions & Did You Know?	28
Ashland Co Chapter News	29
Programs, Local & Other	30
Publications For Sale	31
Chapter Info, Library Volunteer Hours	32

## Venus of Vaudeville, Local Prima Donna of New York City & Europe Laid to rest in Hayesville's Vermillion Cemetery



In the Vermillion Cemetery, located just south of Hayesville on Route 60 a very distinctive monument is visible from the road. It catches your eye as it is a triple-arched white marble standing approximately seven feet tall, not more than 30-40 feet from the road. It is a fitting memorial to a world renowned Opera and Vaudeville star. It reads “Mabel BERRA ALLEN, noted prima donna of New York City and Europe 1886–1928 - beloved wife of Charles H. ALLEN”. “The golden voice has gone to God who gave it”.



Mabel BERRA was born Oct 1, 1886 to John BERRA and Sarah “Sadie” STINER. (The marriage record for Sarah Stiner and John shows his name as BERRY, as well as the 1900 census for the family of four in Toledo, Ohio) and a 1908 Toledo City Directory listed as BERRY).

While some records say she was born in Crestline, Ohio, her overseas passengers list states she was born in Toledo. A year later, her sister, Dolly was born in Toledo on Nov 8, 1887. Sometime after 1900, John and Sadie divorced, and in 1913, Mabel’s mother, Sadie, moved to Loudonville to be close to her mother, Mary Ann (WHITTEMIER) STINER WENTZ who was from the area.



*(Continued on page 18)*

## CHAPTER MESSAGE



Our Chapter is looking for volunteers who would be willing to donate one or two hours of their time to help out at the Chapter library. It could be weekly or monthly or even just one time. We would like to have Chapter members staff the library several days throughout the month to help visitors who come into the library. You don't need to know a lot about the library. Actually it's a great way for you to do some local research of your own and you might find some resources in the library that you never knew were there. This is what we call a "win-win" solution. You get to learn more about the library and maybe some of your genealogy research and also provide help to others who may be visiting the library for the first time.

The hours that we would like to have someone present is First Tuesday of the month 7-9 pm; Second Thursday of the month 1-3 pm; Third Tuesday of the month 5-6 pm (before the chapter meeting); Third Saturday of the month 10 am to noon; and the Fourth Thursday of the month 1-3 pm. (See last page for a recap of these hours).

If you are interested in helping at any of these times or have questions, please contact Karen HISSONG, our Librarian, at [midnightflyer3@frontier.com](mailto:midnightflyer3@frontier.com).

### Venus of Vaudeville - (continued from page 17)

There have been many articles written about her life and several books that mention her stardom; you can find her name in almost every major newspaper across the United States and even in Europe of that era. Also, a scrapbook kept by her mother, Sadie, has survived over the years and provided a glimpse of her daughter's professional accomplishments.



It seems her singing career began around 1902. In that year Adelina OTTI, a well-known diva of the time, was in Toledo for a performance. She was told about a local girl who possessed an exceptional voice and stage presence. With that, Ms. OTTI arranged to hear the 16-year-old sing and was impressed enough to give Mabel a few informal lessons and to tell the manager of the local Keith theater about the young singer. A few months

later, the manager of the Keith theater found himself short an act and persuaded the girl to fill in. The audience's enthusiastic response to her performance prompted the manager to sign Mabel, reportedly for the highest salary ever paid a beginner. One month later, the girl made her professional debut in Winnipeg, Canada. Within two years, she was regularly performing in Chicago and New York and other major U.S. cities.

Soon Mabel came to be known as "the queen of comic opera" and the "Venus of Vaudeville." Over time she studied grand opera in five different languages and could sing with a vocal range of three octaves.

Many of the reviewers wrote in great detail about the costumes she wore, where she often changed her costumes many times during a performance and prided herself on these outfits.

The press often gave rave reviews of her, mentioning that her voice was "one of the finest to ever fill the niches and naves of the Temple Theater". Another review states "Her beautiful voice, face, and figure, her engaging personality and elaborate costumes caught the audience at the very start". In 1920 one such writer discusses her prima donna status as "... vocal ability is by no means the sole requisite of a successful prima donna. Even the standard of grand opera has changed so that the prima donna who simply stands and sings is never popular for a long time. To a great extent qualities other than her voice have been responsible for Mabel BERRA's popularity.....fine rich soprano of wide range and is under perfect control. It means that Miss BERRA is the fortunate possessor of other qualities that endear a theatrical light to audiences. These qualities are appearance, personality and a decided lack of condescension".

At the age of 22, after achieving such a tremendous success in her homeland, Mabel took her singing career abroad. She made two tours of Europe; one lasting 14 months in 1909-1910; the second lasting six months in 1912. BERRA performed for huge crowds in Europe, including royalty and visited most of the major cities of Europe, such as Vienna, London, Berlin, Amsterdam,

Paris, Nuremberg and Munich. She was so well loved that she was often called back for numerous encores. She had many offers to stay in Europe, but due to the outbreak of World

(continued in page 19)

**MISS BERRA IN  
"LITTLE NEMO"**



Miss Mabel Berra is singing the prima donna rôle in "Little Nemo," at the New Amsterdam Theater. Miss Berra has a well-trained voice that shows to particular advantage in that big number, "Give Us a Flag." This young actress has made an excellent impression in her first big rôle in a production of this kind.

(The New York Star; Dec 26, 1908 page 25)

**Venus of Vaudeville** - (continued from page 18)



**Mabel Berra** (1886-1928), American prima donna and vaudeville star, as she appeared at the London Coliseum 'in operatic excerpts and other songs' in August 1910.  
(photo: Hana, London, probably 1910)

War I, she ultimately canceled her third tour and returned home to the United States. During this time she was a pupil of Victor MAUREL, the notable French baritone.

It was during this second European tour that Mabel signed to play the female lead as Lulu Von LINDEN in the "Eternal Waltz," a Viennese opera, which opened Oct. 31, 1912 with a cast of 50 including a 20-piece orchestra. It continued to tour the country, making stops in Winnipeg, Spokane, Portland, San Francisco, Kansas City and New Orleans.

Three of her most notable Musical/Opera's were Little Nemo (1908), The Enchantress (1911-1912), and The Eternal Waltz (1915).

In the early 1920s, Mabel and her husband, Charles H. ALLEN, whom she had met in 1913 while touring in the "Eternal Waltz," bought a home in Great Neck, Long Island, which was a short train commute from New York City, where Charlie worked as a booking agent for the Keith Vaudeville Circuit.

Then in 1928 it all ended! Mabel's life ended abruptly at the age of 42 in New York where she and her husband, Charlie, lived. She was semi-retired by then and had taken her husband to the train station. On that Saturday afternoon, December 28, 1928, Mabel BERRA was walking "Buster", her brindle Boston Terrier, when the dog broke loose and ran into the street. While trying to retrieve her dog from the road, BERRA was struck by a car and died.

Four days later, funeral services were conducted for the world acclaimed Prima Donna in her mother's West Main Street home in Loudonville, Ohio. Later that day, Mabel was laid to rest in the family plot in Hayesville's Vermillion Cemetery. Seventeen months later, on May 24, 1930, a memorial service was conducted at the burial site to dedicate a magnificent marble marker. Designed and erected by the Ralston Granite Co. of Howard, it was thought to be unlike any other in the state, honoring the former Venus of Vaudeville. The monument stands as a reminder of her world-renown stardom with several

bars of "La Traviata" (her favorite opera) carved on the middle sepulchers containing her remains, the other two are those of her mother, Sarah STINER BERRA who died in July 1944, and her sister, Dolly BERRA LATSHAW, who died in June 1978.

Her obituary, from the Loudonville Times (Loudonville, Ohio) on December 27, 1928, page 1, column 4 is as follows:

"Mrs. Charles H. ALLEN, widely known singer and daughter of Mrs. Sadie BERRA of Loudonville, was killed Saturday afternoon in front of her home at Great Neck, Long Island, when she was run down by an automobile. Reports say that Mrs. ALLEN ran into the street to rescue her prized Boston brindle terrier dog when she was struck by the oncoming auto. Mrs. Allen was a prime[*sic*] donna and coloratura soprano, being known on the stage and in the theatrical circles as Mabel BERRA. Her husband is a booking agent in the theatrical profession, being a representative of the Keith vaudeville circuit.



Mrs. ALLEN has headlined bills on the Keith-Albee circuit and sang on the concert stage in the United States and in the larger cities of Europe. She had planned a trip to Europe next summer, it is reported.

She is survived by her mother, Mrs. Sadie BERRA, of Loudonville, her husband, and one sister, Mrs. ROCKWOOD of New York City. The remains arrived in Loudonville Tuesday and funeral services conducted by Rev. J. H. KUHLMAN were held at the family home on Maple Heights, Wednesday afternoon, December 26th. Interment in the family lot at Hayesville."

FOOTNOTE: In my research for her I found that she had at least one cocktail named after her, "The Mabel Berra Cocktail" dating in the 1917 era, which used Swedish Punch, slow gin, and lime juice. She even helped write a song during World War I called "Our Yanks"; words by Eve UNSELL, melody by Mabel BERRA, 1918.

(She may have been married once before as I found a New York City marriage record between John Charles HANNER and Mabel Hester BERRY, born in Toledo, Ohio and parents listed as John BERRY and Sadie STANER.

Sources:

- Wikipedia
- Ashland Times Gazette Newspaper article , Apr 6, 2011
- The Brooklyn Daily Eagle, Sun Jun 5, 1914
- The Times Democrat, Mon, Apr 21, 1913
- The New York Star Bulletin, 1908
- "Recipes for Mixed Drinks," by Hugo R. ENSSLIN (1917)
- New York, New York City Marriage Records, 1829-1940," 30 Mar 1911
- 1912 New York, New York; Microfilm Serial: T715, 1897-1957; Microfilm Roll: Roll 1913; Line: 17; Page Number: 43

## JUDGE WILLIAM OSBORN died at his home, on Center street, Wednesday, February 11, 1880

Judge William OSBORN died at his home, on Center street, Wednesday, February 11, 1880, at 2 o'clock P.M., aged 58 years. "A good man has gone to rest".

The Judge was born in Columbus, O., May 11, 1821, graduated in his college course at Athens, O., when Prof. McGUFFEY, L.L.D. was president of the college; read law with his brother Hon. J. R. OSBORN, now of Toledo, in Norwalk, O., and was there admitted to the bar in 1845, came to Ashland in 1846, with Col. Dick PARSONS, now of Cleveland, and stayed about six months, when he returned to Norwalk. He shortly after made arrangements with Gen. W. SLOCUM to form a partnership and returned to Ashland in the spring of 1847, and since that time has been actively engaged in the practice of law, save a short time he was at Nashville, Tenn., in the quartermaster's department, and five years he served as Common Pleas Judge for the counties of Ashland, Richland and Morrow. He was married in Norwalk, O., Oct. 15, 1851 to Miss Cornelia FAHR, who survived him, by whom he had three daughters, Kate, Belle and Lizzie. In the spring of 1855 he formed a law partnership with Wm. B. ALLISON, now U.S. Senator for Iowa, which partnership was kept up till ALLISON moved to Iowa. He then formed a partnership with Judge CURTIS which continued for a number of years. In 1866 he was elected Common Pleas Judge, defeating Hon. Geo. W. GEDDES, by a few votes, which office he held five years. He then practiced alone, until in 1875 he formed a partnership with P.S. GROSSCUP and latterly the firm was enlarged by the admission of C.J. KENNY.

He was an intelligent and cultured man, one who loved his family and showed his affections to them in a remarkable degree. He confided in them and they in him. He was a moral and religious man; was superintendent of the Presbyterian Sabbath School, for many years, and carried in

his actions the principles he taught the children. He was identified with much of the business of Ashland, being President of the Ashland Mutual Insurance Co., and director of the First National Bank. He was the first editor of the Ashland Times, and after withdrawing from the editorship, furnished many articles to the paper.

His death was a glorious ending to his useful life. At one o'clock he called his daughter, Belle, to his bed, bade her good-bye, and told her to call her mother and sisters into his room as he wanted to be with them the last hour of his life. These he bade good-bye. He passed his last hour with his family about him and died triumphantly.

He was buried, from his home on Friday, at 10 A.M., the funeral service being conducted by Rev. S. W. MILLER of Mansfield. The funeral was largely attended, business houses being closed. The bar attended in a body. Many of his legal friends from neighboring towns were present, among whom were Judge DUNN of Mount Gilead, Judge DICKEY, Hon. Manuel MAY, Hon. H. C. HEDGES, John W. JENNER, Andrew STEVENSON and N. N. LEYMAN, of Mansfield.

After Sabbath School last Sabbath, memorial services were held on which occasion fitting and appropriate, remarks were made by S.W. BEER, who was assistant superintendent with him and by Dr. J. J. CRESSINGER and E. T. DRAYTON, who preceded him as superintendent. They alluded to his eminent worth and paid glowing tributes to his memory.

Mrs. J. O. JENNINGS then read the following: *[this following paragraph was so hard to read that only a few words were decipherable and not enough to make sentences].*

*Ashland Press, Feb 19, 1880, page 2, col 3*

*Articled submitted by Barb HART*

### Short Bio of the OSBORN Family:

Parents were Ralph OSBORN and Catherine RENICK, who were from Connecticut and Virginia, respectively. Wife, Cornelia FARR OSBORN, died in 1905

Children:

Kate Renick (born Aug 5, 1852 - died Sep 1896) died from lung problems)

Belle Farr (born Jul 24, 1854 - died Mar 19, 1923, Austen Texas; died of pneumonia)

Elizabeth "Lizzie" Cornelia (born Feb 24, 1859 - died May 5, 1897; died of consumption)

William, his wife Cornelia, and their three daughters are all buried in Ashland Cemetery  
Osborn school named for the family (<https://sites.google.com/site/osbornschoolashlandohio>)

Sources:

FindAGrave memorials; Ashland Cemetery, Ashland, Ohio

American Biography: A New Cyclopedia, Volume 11, edited by William Richard CUTTER, page 88

The Firelands Pioneer, volume 18, page 2081

Old Northwest Gen. Quarterly (1906), volume 9, page160

Ashland Cemetery Burial Records, Ashland Co, Ohio (2007 - Ashland Co Chapter of OGS)

**Deaths from Ashland Times Gazette**  
Wednesday evening, January 18, 1956 (page 2)

**Jacob Brooks HAMM,  
Loudonville Native, Dies in Mansfield**

Jacob Brooks HAMM, 431 Johns Ave, Mansfield died Monday night at the Mansfield General Hospital where he had been a patient the past week.

The son of Nicholas and Barbara KLEIN HAMM, he was born near Loudonville May 1, 1862 and made his home in Loudonville until 14 years ago when he moved to Mansfield.

Mr. HAMM was a member of the Zion Lutheran church and a former member of the Royal Order of the Moose in Loudonville.

Survivors include five daughters, Mrs. Mae SWITZER of Mansfield, Mrs. Ella DePAPPA of Milwaukee; Mrs. Ovia McDONALD of San Carlos, Cal; Mrs. Margery BUCHER of San Pedro, Cal; and Edith HAMM of Columbus.

His wife, Della, preceded him in death in 1950 and a daughter, Mrs. Edna KNUEBEL, two weeks ago.

Friends may call at the T.B. Gilbert Home where funeral services will be held at 2:30 p.m. Thursday with the Rev. Ralph HOUSE, pastor of the Zion Lutheran Church officiating. Burial will be made in the Loudonville cemetery.

**MAURER Services Set for Thursday**

Funeral services for Mrs. Karl MAURER who died Tuesday at her home, RD Lakeville, will be held at 2 p.m. Thursday at the St. John's Lutheran church in McZena. A foster brother, Albert PETERS, also survives her.



**Mrs. Mary J. FINLEY  
Former Resident of County Dies**

Funeral services for Mrs. Mary Jane FINLEY, 82, of 678 Silver St, Marion were held at 1:30 p.m. today at the Boyd Funeral Home in Marion. Death followed a three months illness.

Mrs. FINLEY was born Feb. 27, 1874 in Ashland County, the daughter of John McCORMIC and Anna HANNA McCORMIC. She was married to Patterson FINLEY in Ashland County in 1892. He preceded her in death in 1907.

Survivors include a daughter, Mrs. Clarence GRAMLEY, of Marion; four sons, Daniel Jay, John W. and James, all of Marion and Ray D. of Ashland; a sister, Mrs. Emma KHAHW [sic] of Crestline; 20 grandchildren, (23) great grandchildren and one great-great grandchild.

Besides her husband, she was preceded in death by a son, two brothers and sisters.

The Rev. M.W. HOLLESEN officiated for the services and burial was made in the Chapel Heights Memorial Garden in Marion.

Mrs. FINLEY was a member of the Lutheran church in Marion.

**John GARST, Died at Mohican**

John GARST, a well-known and respected pioneer resident of Ashland county, died at his late home in Mohican last Tuesday morning at the advanced age of 84 years. He leaves several children. The funeral occurred Thursday.

*(Ashland Times Gazette, 30 Nov 1904, page 3, col 2)*

**DID YOU KNOW THIS ???**

- ◆ Just because you have a gravestone and a location of burial does not (necessarily) mean that person is buried there. Recently, I have had two different situations where someone has informed me that there is a burial for that same person (included dates of death on the stone) in another cemetery (or even another state). You may need to contact the cemetery for more info. One of the graves could be a "cenotaph" in the state where they lived and buried in the state they were from, or reverse.
- ◆ The female who has been married twice or more could be buried with her husband whom she had the children with. She may even be buried with his surname, even though when she passed away she had a different last name. So when you are looking for the cemetery burial based on the Death Certificate, keep this in mind. Also if you have the cemetery marker info but can't find her death certificate, she might have been remarried at the time of death and the Death Certificate will be under that surname.

**HAPPY HUNTING AND REMEMBER - GENEALOGY IS A PUZZLE, RESEARCH IT ACCORDINGLY !!**

### Third Annual Contemporary SELBY Family Reunion

Saturday June 17, 2017 - Brookside Park, Ashland, Ohio

Come and help us celebrate our SELBY family (See page 28 for more details on the upcoming Reunion)

Contact Steve SMELTZER for more information (stevesmeltzer@cinci.rr.com 513-301-8535)

This reunion was started in the 1920's by the families of the two youngest children of Thomas SELBY (1782-1868), namely John Smurr SELBY (1837-1895) and William McCune SELBY (1839-1897). John and William inherited Thomas' farmland in Mifflin. These reunions were held every year from the mid-1920's until the mid to late 1930's. We suspect that WWII interrupted the consecutive string. The first "modern" reunion was held in 2015 and was attended by over 80 descendants of Thomas SELBY.

Thomas SELBY was married twice. Thomas and his first wife, Catherine HAY had eight children: Thomas, Hamilton Jefferson, Thornton Fleming, Mary, Rosannah, Luke, Enoch George, and Joseph Benson. With his second wife, Matilda DISNEY, four children were born: Samantha Jane, Mary Catherine, John Smurr, and William McCune.

Although the vast majority of the attendees at the

recent reunions are descendants of the latter two (John Smurr SELBY and William McCune SELBY), we have been fortunate to include a descendant of the first born, Thomas SELBY (1807-1868). We are hoping that future reunions will include descendants of additional children of Thomas and Catherine and Thomas and Matilda.

Surnames of those who attended the first two recent reunions: BLAKE, BREWER, CARVER, CUTRIGHT, DAVIS, DOEHLA, ELMORE, GARDNER, GEARY, HESS, KNEPPER, LENTZ, MARX, McKEE, SELBY, SHARROCK, SIEGENTHALER, SMELZER, STEWARD, STRAZINSKY, VASKO.

Other surnames who have expressed interest in attending future reunions: BELL, BRUGMAN, CARBETTA, COLLISON, GAGE, HARRIS, HENRY, KAZAL, LEGRIS, MILLER, READING, RUSSELL, SAVELLI, SCHON, SPEISS, STEVENS, STREICH, VAUGHN, WACLAWSKI, ZACHARIAS.

#### Pictures of two reunions.

The first from 1925 or 1926, which was held at the home of John Smurr SELBY, located on County Rd. 2075 in Mifflin, Ohio

The second was taken at the 2015 reunion at Brookside Park, Ashland, Ohio.



Article and Pictures provided by Steve SMELTZER

**BIRTHS AND DEATHS 1902-03**

The township and precinct assessors have filed with the probate judge reports of births and deaths for the year ending March 31, 1903, as follows: *(Added Note: If their age is mentioned it is in brackets after the date)*

*(Continued from previous newsletter)*

ASHLAND, 1ST WARD - Births

Helen Virginia BRUSH, Mch. 21, '02  
Robert Pancoast BOGNIARD, Oct. 20, '02  
Marie BERRY, Sept. 22, '02  
Ruth Adaline DeAMMON, Feb. 11, '03  
John Wedon HOOT, Nov. 12, '02  
John Henry HOFFLER, May 29, '02  
John Samuel HECKMAN, Dec. 12, '02  
John Richard LEMON, Jan. 11, '03  
Gerald Lloyd McENTIRE, June 29, '02  
Marshall Wade McENTIRE, Jan. 1, '03  
Virginia Maud McCRAY, June 17, '02  
Alfred Edward McDANEL, Jan. 20, '03  
Ruth Marie RAUBENOLT, Sept. 4, '02  
Clarence Percival REED, Oct. 8, '02

ASHLAND, 1ST WARD - Deaths

Iona M. BENTLE, Jan. 27, '02 (5 mths)  
James W. BRANT, Mch. 15, '03 (55)  
John W. BRUBAKER, Feb. 1, '03 (79)  
Samuel BALDWIN, Nov. 26, '02 (73)  
William CULVER, Jan. 26, '03 (71)  
Fredricka GORZ, July 24, '02 (74)  
Addie M. JAMESON, Dec. 30, '02 (48)  
Howard E. KEISTER, Aug. 22, '02 (4)  
Robert McKEAN, Aug. 25, '02 (77)  
Clara L. VANTILBURG, Jan. 30, '03 (18)

ASHLAND, 2ND WARD - Births

May ALEXANDER, April 12, '02  
Franklin BRONSON, Jan. 3, '03  
Luella F. BIDDINGER, Sept. 16, '02  
Ellen L. CAMPBELL, June 20, '02  
Ethel Aida EMMENS, Sept. 14, '02  
Helen GLINN, Nov. 7, '02  
Thelma N. GANYARD, Nov. 25, '02  
Vera KNAPP, Oct. 24, '02  
Mary L. LOVE, Feb. 16, '03  
Frances E. LALONE, Sept. 9, '02  
H. Montroville McFADDEN, Jan. 6, '03  
Charles L. MORRIS, Aug. 27, '02  
Theodore S. MYERS, Jan. 20, '03  
Milo D. SUMMY, Mch. 21, '03  
Sarah B. SMITH, May 2, '02  
Beatrice WITMER, Jan. 4, '03  
Howard I. WALLACE, Oct. 20, '02  
Irene WAHL, Feb. 14, '03

ASHLAND, 2ND WARD - Deaths

Adaline BACKHOUSE, May 12, '02 (44)  
Alice HOOVER, Aug. 25, '92, (26) ('92  
*sic, probably '02)*  
Eve Ann MASTERS, Aug. 5, '02 (72)

Philip E. MANSFIELD, Nov. 27, '02 (6)  
Betta Emma MARKS, Feb. 2, '03 (28)  
Grace L. PALMER, Oct. 29, '02 (29)  
Audra STEM, Dec. 12, '02 (11)  
Angie WOODS, March 31, '03 (47)

ASHLAND, 3RD WARD - Births

Harris H. ATTERHOLT, July 11, '02  
Freddie KAUFFMAN, Nov. 29, '02  
Myrtle Louise KNOTH, Sept. 20, '02  
Arthur W. KELLY, Feb. 8, '03  
Harold D. MORR, March 3, '03  
Harold SATTLER, Nov. 2, '02  
Albert Willard STENTZ, Apr. 21, '03  
Steward WILLOUR, Mch. 10, '03  
Corinne WRIGHT, Apr. 21, '02

ASHLAND, 3RD WARD - Deaths

Henry ANDRESS, April 19, '03 (66)  
E.J. COWAN, Sept. 29, '02 (77)  
John M. HETTINGER, Jan. 5, '03 (19)  
Maria KELLER, Jan. 10, '03 (71)  
William MORR, Oct. 8, '02 (67)  
Zelia[?] ROPP, Mch. 5, '03 (15)  
Daniel THOMAS, Jan. 4, '03 (47)  
Thomas P. YEAGLEY, Apr. 25, '03 (30)

ASHLAND, 4TH WARD - Births

Brubaker, GLENN, Oct. 2, '02  
Brubaker, ESTHER, Aug. 10, '02  
Brandt, Leon FAIRCHILD, Oct. 27, '02  
Fred H. COWAN, March 1, '03  
Marshall H. ESBENSHADE, Feb. 6, '03  
Marian E. GRINDLE, Aug. 6, '02  
Harry HINKLE, June 5, '02  
Gerald HINKLE, Dec. 18, '02  
Thelma A. HINKLE, Feb. 13, '03  
Mary Mabel KOPP, Nov. 15, '01  
Carl William LATTER, Aug. 13, '02  
William David OVERLY, May 23, '02  
Harriet Elizabeth PRICE, Mch 14, '03  
Frieda A. TINKEY, Nov. 12, '02

ASHLAND, 4TH WARD - Deaths

Esther BRUBAKER, Aug. 14, '02 (4days)  
Charles E. CLUGSTON, May 18, '02 (51)  
Harry HINKLE, July 10, '02 (35 days)  
Madison HARDAUGH, April 16, '03 (1)  
Mattie McKEAN, April 17, '03 (57)  
Mary McADOO, Oct. 4, '02 (67)  
William O. McDOWELL, May 27, '02 (32)

MONTGOMERY TWP - Births

George J. AMBROSE, Feb. 4, '03  
Viola I. BOYER, Nov. 12, '02

J. Eby CLARK, Mch 1, '03  
Bessie May FAST, Sept 10, '02  
Maggie A. FIGLEY, Oct. 17, '02  
Lewis H. A. HEITZMAN, Oct. 6, '02  
Martha L. HESS, Mach. 18, '03  
Audra Es[?]lia HILLER, Nov. 3, '02  
Ruth HELFER, Feb. 9, '03  
Twyla Blanche ICEMAN, Nov. 29, '02  
Marshall McDANIEL, Oct. 6, '02  
Carl McKIBBON, Jan. 1, '03  
Baby MORR, Mch - '03  
Paul Earl SCHWEYER, Mch. 5, '03  
Clarence H. SCHOONOVER, Sept. 5, '02  
Hattie Myrtle STONE, Oct. 23, '02  
Harold C. WITMER, Mch. 29, '03  
Howard WARRICK, Nov. 4, '02

MONTGOMERY TWP - Deaths

Philip BAUM, Aug. 20, '02 (79)  
Fern JACKSON, Sept. 26, '02 (16)  
Grace P. LAWBAUGH, Sept. 14, '02 (4)  
Mary McQUATE, Mch. 24, '03 (75)  
Nancy NELSON, June 20, '02 (73)  
William P. RIDDLE, Mch. 3, '03 (68)  
Ruby SCHOONOVER, June 5, '02 (4)  
Ephraim SLOCUM, June 3, '03 (84)  
Fannie SHELLER, Mch. 30, '03 (90)  
Walter R. SHAUM, Mch. - '03 (8)

ORANGE TWP - Births

Gertrude M. BOWMAN, Mch. 5, '03  
Lola Arline BRYTE, May, 16, '03  
Ralph CUNNINGHAM, Mch. 12, '03  
Anna CELLARS, Oct. 16, '02  
George CASSEL, Oct. 7, '02  
Arland Marclean CHANEY, Apr. 13, '03  
Katharine Mercile FORD, July 20, '02  
Ray Edward GARBER, Feb 26, '03  
Earl Howard HETLER, Mch 6, '02  
Eugene G. MILLHEIM, July 14, '02  
Glenn Addison NELL, Aug 18, '02  
Harold Eugene RUBY, June 5, '03  
Rilnea May SHANKS, May 17, '02  
Paul SHEETS, Jan 20, '03  
Vera Bella WELCH, Feb 27, '03

ORANGE TWP - Deaths

Kate BOGER, Mach. 5, '03 (2)  
Walter BOGER, Mch. 13, '03(6 mths)  
Alma L. BOWEN, Nov. 11, '02 (46)  
Bessie M. HITLER, Apr 21, '02 (13)  
Maria KILGORE, Aug. 24, '02 (72)

*(Continued on page 24)*

**BIRTHS AND DEATHS 1902-03**

*(continued from page 23)*

PERRYSVILLE PRECINCT - Births

Fred MCKINLEY Aber, Sept., 30, '02  
 Kenneth Dale ABER, Jan. 18, '03  
 Jessie Helen BOWEN, Feb. 20, '03  
 Helen COWEN, Aug. 17, '02  
 Edna M. DeWEES, June 30, '02  
 Pearl Emma FUNK, Nov. 21, '02  
 Wandanola GALLAGHER, Nov. 11, '02

Raymond LIBOLT, March 5, '02  
 Carl Clayton MAURER, Aug. 14, '02  
 John Albert MORTON, Oct. 1, '02  
 Gladys Frances McCLURE, Mch. 15, '03  
 Howard Allen LAVENGOOD, July, 23, '02  
 Hazel Ruth OSWALT, Feb. 16, '03  
 Glayda PLANK, June 5, '02  
 Paul RUSSELL, Feb. 20, '03  
 Vevia May ROWE, Oct. 11, '02  
 Aleta May SHAMBAUGH, Dec. 24, '02  
 Enid Vinna SMITH, April 25, '02

Charles Cuyler TOMS, April 5, '02  
 Hallie Berdell TRUMHOUR, May 7, '02

PERRYSVILLE DISTRICT - Deaths

Eliza AREHART, Feb. 15, '03 (84)  
 John BEACHLER, Oct. 18, '02 (76)  
 Benjamin F. GUTHRIE, Nov. 27, '02 (50)  
 Venna GUTHRIE, Aug. 12, '02 (4 mths)  
 Levi MAURER, Sept~ 13, '02 (52)  
 Sarah Jane MILLER, June 22, '02 (73)  
 Frances Ellen SMITH, Sept. 13, '02 (67)

**The Births and Deaths of 1902-03 were all printed in the Ashland Press throughout a six-week period.**

May 27, 1903: (Mohican-North, Green, and Jackson-Polk Precinct)	<i>(included in Newsletter Vol 35-4)</i>
Jun 3, 1903: (Ruggles, Sullivan, Mohican-South, and Hanover-Loudonville Precinct)	<i>(included in Newsletter Vol 35-4)</i>
Jun 17, 1903: (Clear Creek, Milton, and Lake)	<i>(included in Newsletter Vol 36-1)</i>
June 24, 1903: (Vermillion, Hanover, McKay Precinct, and County Infirmary)	<i>(included in Newsletter Vol 36-1)</i>
June 24, 1903: (Perrysville Precinct, Ashland 4th Ward)	<i>(included in Newsletter Vol 36-2)</i>
Jul 1, 1903: (Orange, Montgomery, and Ashland-1st, 2nd and 3rd Ward)	<i>(included in Newsletter Vol 36-2)</i>
Jul 29, 1903: (Mifflin, Perry, Troy, and Jackson-Jackson Precinct)	<i>(included in Newsletter Vol 36-1)</i>



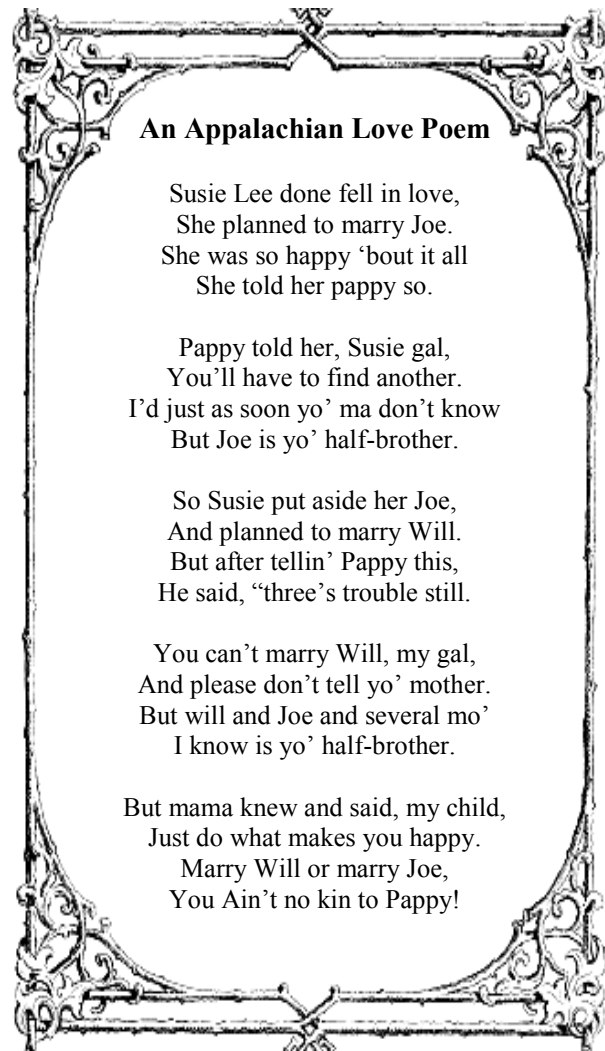
**David BANEY -  
 Died at Akron -**

David BANEY, at one time a resident of Ashland, died very suddenly at his late home west of Akron and was laid to eternal rest at Akron cemetery Tuesday afternoon. Death resulted from pleura pneumonia. He was in the sixty-seventh year of his age, and was a farmer by occupation. He was born May 19, 1838. Left to mourn his departure, besides his wife, are the following children, seven in number: Mrs. Charles MOORE, Mrs. Carl STENCE and Mrs. Wilbert HARTMAN, all of Akron; and Walter BANEY, Mrs. Christ BURNS, Mrs. John SATTLER and Mrs. Herbert SOULES, all of Ashland.

*Ashland Times Gazette; 30 Nov 1904, page 3, col 2*

*Genealogical Note:*

His wife was Rebecca MUNDORFF, whom he married in Wooster, Wayne Co, Ohio 10 Oct 1861



**An Appalachian Love Poem**

Susie Lee done fell in love,  
 She planned to marry Joe.  
 She was so happy 'bout it all  
 She told her pappy so.

Pappy told her, Susie gal,  
 You'll have to find another.  
 I'd just as soon yo' ma don't know  
 But Joe is yo' half-brother.

So Susie put aside her Joe,  
 And planned to marry Will.  
 But after tellin' Pappy this,  
 He said, "three's trouble still.

You can't marry Will, my gal,  
 And please don't tell yo' mother.  
 But will and Joe and several mo'  
 I know is yo' half-brother.

But mama knew and said, my child,  
 Just do what makes you happy.  
 Marry Will or marry Joe,  
 You Ain't no kin to Pappy!

## HEIFFNER Family of Ashland, Ohio

(See Page 28 for upcoming reunion information for June 25, 2017)

The War of 1812 has finally ended and it is now time to move on. Two hundred years ago a man by the name of John HIFFNER, Jr. immigrated with his family, consisting of his wife and three daughters, from Franklin County, Pennsylvania to Orange Township, Ashland County, Ohio, in November, 1817 and during the same year purchased of John MACKERILL the southwest quarter of section 14; being the land upon which he resides. Four families from Pennsylvania traveled in company, and settled in Orange Township at the same time. Namely, those of his father, Jacob HIFFNER Sr., his brother Frederick HIFFNER, and of his brother in law, (possibly John) RIDENOUR. Mr. HIFFNER erected a temporary cabin, which afforded shelter for his family during the winter of 1817-18. In the meantime he had constructed a rude cabin upon his own place, and in April, 1818, removed his family and scanty stock of household effects, and engaged in the improve-

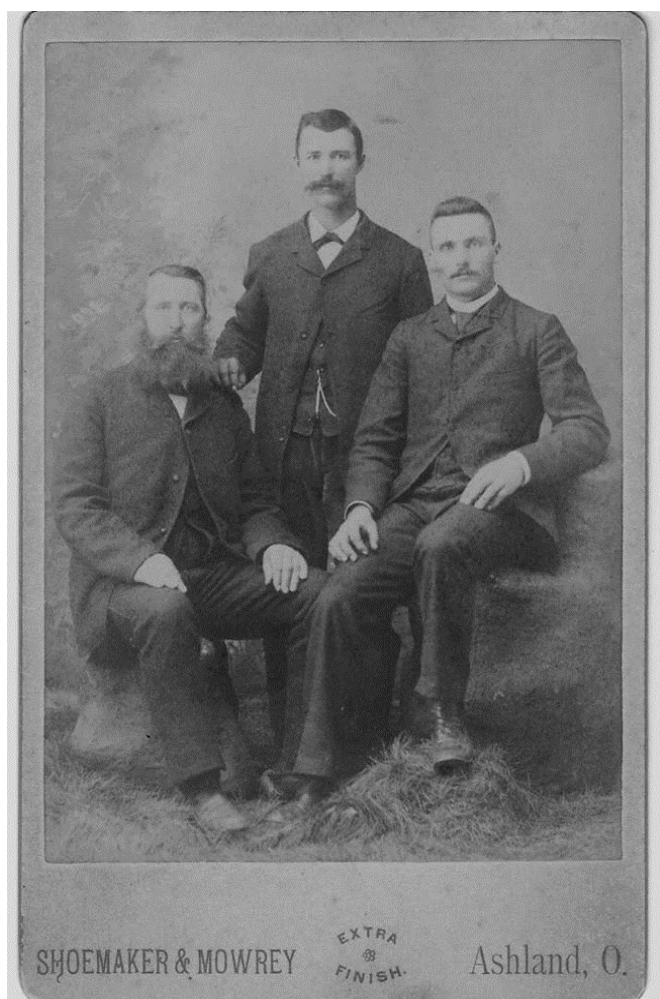
ments of his own land. H. S. KNAPP goes on in 1863 in his "History of Ashland County," to describe the life of those early pioneers in the first year in a cabin without doors, chimney, or floor, and their skills in finding food to last the winter.

And such was the quiet life of a family that started out in a different manner. John Jacob HIFFNER/HEFNER/HEIFNER/HAFNER Sr. was born on September 23, 1752, in Hesse, Darmstadt, Germany. His father, Albertus, was 24 and his mother, Maria Catherine KONIG, was 18. In 1769 the family immigrated to America landing in Maryland and settling near the Pennsylvania border. In 1776 he enlisted in the German Regiment of the Maryland Continental Line under Captain William HEYSER's Company in Lt. Col. WELTER's German Regiment. After 3 years of service, he was discharged Oct. 12, 1779. He fought in the battles of Trenton, Princeton, Birmingham, Monmouth, and Saratoga. After his discharge he moved to Huntingdon, PA. On 11 May 1785 he married Elizabeth MUELLER in Walker Co, PA in Methodist E. Church. They had 11 children together until Elizabeth died 13 Jan 1824 in Nankin, Ashland Co. Four years later on 4 Nov 1828 in Wayne Co, OH, he married Mary Elizabeth HANKEY PRIEST. They had no children together, but raised some of her children from a previous marriage. He died on November 23, 1848, in Nankin, Ohio, at the impressive age of 96. Mary didn't die until 7 May 1861, at the age of 91, living a full life.

Now they lie quietly at rest in a cemetery hidden from view on the old HEIFFNER family farm. Even though the farm has passed out of the family, there is a lane that goes up the hill to the small grassy fenced in area known as the HEIFFNER Cemetery overlooking a woodland stream. It is well cared for still and visited from time to time by family members who wish to honor their ancestors. Many tales from Ashland County and family histories could be told of this family and its descendants, one of Ohio's and Ashland County's first families. Their names are intertwined with others from that time period – names like RITENOUR, HARTMAN, RICHEY, PRIEST, MARKS, SHOPBELL, McCRILL, BISHOP, ROWLAND, and the list goes on. For those wanting to learn more, there are many records in the archives of Ashland County.

Or, follow those remaining in the Facebook group, HEIFFNER Family of Ashland County, Ohio. [www.facebook.com/groups/524410917765483](http://www.facebook.com/groups/524410917765483).

\* \* \* \* \*



Phillip HEIFFNER on the left and brothers, Jacob and David. Sons of David HEIFFNER who is buried in the HEIFFNER Cemetery.

Cemetery is located north of Nankin off of Co Rd 58. Article and photo provided by Carolyn DeLAY. Contact her regarding the reunion or more information on the family at the Facebook page mentioned above or [cdelay\\_68164@yahoo.com](mailto:cdelay_68164@yahoo.com)

*Looking Back***“REUNIONS—In Times Past”***Looking Back***Reunion Held Friday, Sept. 2, at the Jacob BEEGHLY Home**

History of Family Read at Reunion--Program of Songs, Recitations and Speeches. (Ashland OH Press 7 Sep 1910)

The second reunion of the BEEGHLY family was held Friday, September 2nd in Jacob BEEGHLY's beautiful maple grove, four miles north of Ashland. The day was ideal and a splendid social time was had by all present. It being three years since the last reunion made us enjoy it all the more. The attendance numbered one hundred and seven.

The dinner comprised all the usual picnic delicacies and was splendid in every respect. It was served under the stately maple trees. After dinner the president, Mr. Al BEEGHLY, called the assemblage to order and a short program of songs, recitations, and speeches was rendered. Election of officers was next on the program and Mr. Milton BEEGHLY, of Wooster, was chosen president and Miss Talitha MARTIN, secretary, and Al BEEGHLY, Sherman BEEGHLY, and Wm. SWITER, committee on arrangements. It was decided to hold the next reunion in 1913.

There were many things that brought joy and happiness since our first reunion three years ago. There was also sorrow in some homes, as two dear mothers, one father and several grandchildren have been called to the home above. Those present from a distance were Samuel BEEGHLY and wife, of Rasin, Cal.; Jonas BEEGHLY and son, Frank, of Independence, Kan.; Albert BEEGHLY and wife, of Wagstaff, Kan.; Oliver BEEGHLY, wife and daughters, Alice and Iva and son, Clarence, of Conrad, Ia.; Milton BEEGHLY, wife and daughters, Hazel, Sybel, and Joyce, of Wooster; Sherman BEEGHLY and wife, of Mansfield; Fred TABOR, wife and daughter, Ada, of Clyde; Guy BEEGHLY, of Attica; Wilson BRENNAMAN and wife, of Sidney; Mrs. Kate HOCHSTETLER, of Millersburg; Mrs. John BEEGHLY, and daughter, Faye, of Attica; Mrs. Carl BYERS and daughter, Elizabeth, Miss Sarah and Mr. Edson SMITH, of Scipio Siding, Ohio.

A history of the John BEEGHLY family: -- We go back to

the year 1750 and we find our great grandfather, John BEEGHLY, at the age of ten years, with his parents, on his way to America from Germany. While on the ocean the ship was boarded by pirates and the mother killed and thrown overboard. They landed in eastern Pennsylvania.

When a young man he crossed the Allegheny mountains to Somerset county, Pa., where he married. The lady's name was not ascertained. They raised five sons, one named John, who was our grandfather. He married Susannah FLORA. To them were born three sons. The youngest was named John who was our father. He married Katherine PECK. Great grandfather [sic] John Adam PECK was born in Baden, Germany, in the year 1750. He sailed for America from Rotterdam, Holland, October 6, 1767 in the ship Hamilton, Captain Charles SMITH, commander, and landed in Philadelphia and settled at a place called York. He was married to Katherine R. SMITH. To them were born eight children, six boys and two girls.

Grandfather Jacob PECK was born near York, Pa., March 20, 1773 and married Anna OLINGER, December 22, 1799. To this union were born thirteen children. The tenth child was Katherine, our mother, who married John BEEGHLY November 15, 1829. To them were born thirteen children, nine boys and four girls, all born in Pennsylvania. In the spring of 1853 they moved to Ohio and settled four miles north of Ashland where the children all grew to manhood and womanhood. All married and all reared families but Mary, who was married to Chester DRUSHAL. Out of the twelve families were forty-seven new families created. There are about seventy grand-children and two great grandchildren. There never was a drunkard in this family and in over sixty marriages there never was a separation or divorce. The oldest brother and the oldest sister are dead. Six of the boys are over seventy years old. Eight were present at this reunion."

---

Ashland OH Press Wed 10 Sep 1913 — Held Wednesday, August 27, at the home of Jacob BEEGHLY, north of Ashland. President, Milton BEEGHLY; prayer by Rev. Josiah HOSTETLER, of Millersburg, Ohio. H.W. MARTIN elected next president and Anna SHOWALTER, secretary and treasurer.

---

Reunions have been a large part of family get-togethers' in past times, and still ongoing even into today's society. Ann BUDD has been collecting these notices over time and has donated to our library a notebook full of reunions, family histories, etc. If you get a chance, check out what's in our Library, and take a look at the Reunion notebook.

## Wedding Journey Began in 1839

### Jonas FREER and Mary BRIDGER Wedding Account - Mrs. FREER

There never dawned a more beautiful September morning in north central Ohio than the one eighty years ago today: at least that is what I have always heard.

September 5, 1839 found Squire ALLISON out cutting corn on his farm on the Middle Rowsburg road. With him was his ten-year-old son Bill who was destined to become a senator of the United States from the state of Iowa for a great many years.

The squire rather enjoyed officiating on such occasions, and the fee connected therewith was, of course, acceptable.

Arriving at the farm house he found awaiting him two young couples, who had come in a big wagon from Rowsburg. The high contracting parties were the tall young tavern keeper from Rowsburg and a comely maid of nineteen, a tailoress who had come out west to Ohio three years previously. The other couple was a sister of the groom and a cousin.

"If you'll wait a few minutes, I'll go and change my clothes" said the squire.

"You don't need to on our account, squire" said the bride-elect blushing prettily[sic], "you look alright just as you are".

The tall young man who was six feet and four inches in high produced the license which he had procured from Clerk Samuel L. SARAH at Wooster, two days before (Rowsburg was in Wayne county those days) and the ceremony was duly performed uniting in marriage Jonas FREER and Mary Frances BRIDGER.

"Yes, the squire wanted to change his clothes, but we said he didn't need to," Grandma FREER used to say in telling the story. "He said that being as he didn't have to change his clothes he would charge only fifty cents, but Jonas said he thought it ought to be worth a dollar anyhow and so he gave the squire a dollar. I told Jonas lots of times afterward he ought to have given me that extra fifty cents.

"Squire ALLISON went back to cutting corn and Randolph MIDDAUGH and Jonas' sister, Harriet, and Jonas an' me got into the big wagon again and drove to Ashland. Then we went to Arch FINLAY's tavern on the Wooster

road and got dinner. It was a good dinner, too, even if I didn't cook it.

"After dinner we went back to Rowsburg and that's all the wedding trip we had until twenty-five years later when we made a trip to York state.

"The old tavern across the street from Doc ECKER's in Rowsburg was our first home. Ten days after we were married Jonas took down with typhus fever and everybody said he couldn't possibly get well. I sat up with him day and night and not a soul but me waited or tended him for six weeks. I wouldn't let any of them do a thing for him. My head never touched the pillow in all that time except now and then for a little bit when he would be resting easier.

"One night I dreamed they were pushing a coffin on the beams overhead and when I told my dream all the folks said it was a sure sign that Jonas was going to die.

"But he got well, all right, and those were happy days when he could sit up a little and I went and made him potato soup, which was the one thing he craved. Old Doc ECKER said it was more my nursing than the medicine that pulled Jonas through.

"The next spring we moved out of the tavern onto a little farm on the state road, west of Rowsburg. We lived in a one-room log cabin with Puncheon floors. I used to scrub and scour the boards one at a time and kept them clean as a butter bowl.

"We were saving and accumulated property but Jonas and me were never happier in all our lives than we were in that little log cabin.

"We lived together as man and wife for almost fifty years and were going to celebrate our goden wedding in the fall of the year he died.

"I don't think any two people ever had a happier married life than we did for both of us never got mad at the same time"

By William A DUFF

*Ashland Times Gazette, Sep 5, 1919 (page 3, col 1)*

Article provided by anonymous Chapter member



### GENEALOGISTS LAUGHTER

- ◆ My family tree's roots went underground.
- ◆ Misers are hard to live with but they make great ancestors!
- ◆ Research: What I'm doing, when I don't know what I'm doing!!!



**Now that Spring is here it's time for  
FAMILY REUNIONS**

If you are planning a family reunion for later this year and would like to mention it in the newsletter, please let us know. We'd be happy to post it.

**HEIFFNER FAMILY REUNION - June 25, 2017  
Korean Prayer Chapel in Nankin, Ohio**

There will be a HEIFFNER Family Reunion on Sunday, June 25, 2017 at 12:45 PM at the Korean Prayer Chapel in Nankin, Ohio. It is on the old HEIFFNER family farm. It will be a potluck and all are invited. Updated information can be found on the family Facebook group, HEIFFNER Family of Ashland County, Ohio.

(See page 25 for an article regarding the HEIFFNER family of Ashland County, Ohio)

<http://www.facebook.com/groups/524410917765483>

contact Carolyn DeLAY: [cdelay\\_68164@yahoo.com](mailto:cdelay_68164@yahoo.com)

**Third Annual Contemporary  
SELBY FAMILY REUNION**

Saturday June 17, 2017 -  
Brookside Park, Ashland, Ohio

Help celebrate our SELBY family. The event will include a covered dish dinner, games for the kids (plenty of playground equipment), and many displays of family historical interest: old pictures, family trees, maps of the original SELBY farms, census records and more. (See page 22 for an article on the history of the reunion)

Contact Steve SMELTZER for more information.  
[stevesmeltzer@cinci.rr.com](mailto:stevesmeltzer@cinci.rr.com) - (513) 301-8535

**DID YOU KNOW ???**

**THAT** - The Ohio Genealogical Society has been able to add a bonus to your OGS membership. As of this year, The Ohio Genealogical Society is able to offer as a membership benefit free access to "[FindMyPast.com](http://FindMyPast.com)" for the United States and Canada. (Please see the OGS website, or contact them in Belleville for information). [www.OGS.org](http://www.OGS.org)

**THAT** - The Digital Public Library of America (DPLA) has been collecting digital resources involving more than 1,600 libraries, archives, and museums throughout the US and overseas. It is a free website that gives access via links to the various resources that have partnered with them to bring access to over 11 million digitized items to view. Recently several Ohio resources (such as the State Library of Ohio, Cleveland Public Library, Columbus Metropolitan Library, Ohio History Connection, OhioLINK, OPLIN, and many other Ohio libraries and universities) have partnered with them as part of the Ohio Digital Network of the DPLA. They are hoping that by the end of this year, over 50,000 records will have been added through this Ohio partnership. Check frequently, you never know when you'll find something of interest. (I found an 1899 obit for a Hayesville man in the Kansas State Library holdings.) <https://dp.la/>

**THAT** - many of the men and women who lived during the American Revolution lived into the age of photography? Remember that the age of photography wasn't until sometime after 1840. According to Maureen Taylor "The Photo Detective" there are more than 200 pictures that have been found of individuals who were witnesses of the American Revolution. For more than a dozen years she has been researching to find all known photographs of these individuals who were photographed later in life. (She has two volumes published of The Last Muster which document that search and include approximately 120 images of these American Revolution survivors. Check out the video and the website for more info on these men <https://vimeo.com/210987712>

<https://maurentaylor.com/last-muster-project/>

**THAT** - The Museum of American Revolution (MAR) is a new museum opening in Philadelphia, PA on April 19, 2017. Their collections include several thousand objects, works of art, manuscripts, and printed works. It contains galleries, engaging films, and a massive collection of Revolutionary War artifacts which have been collected for over a century. This museum helps bring the story of our nation's founding to life. Check out their website and consider making a trip to Philadelphia to see it in person.

<https://www.amrevmuseum.org/>

*A truly happy person is one who can enjoy the scenery on a detour !*

## ASHLAND COUNTY CHAPTER NEWS

### Welcome NEW MEMBERS -

To the Ashland County Chapter of the Ohio Genealogical Society. We invite you to submit queries to the newsletter. You might be surprised who else is researching your same family.

1. You can start by submitting a copy of your 5-generation chart to the Chapter for insertion in our 5-generation book located in the genealogy room of the Ashland Library.
2. Contact us to let us know what you would like to see in the newsletter.

Our most recent new member is:

- Margaret E. DALEY from Evergreen Park, Illinois

*If I have overlooked a new member, or those surnames you are researching, please let me know. I'll be glad to add you and your surnames in the next issue.*



- ♦ Ashland Co Chapter is using a monthly e-mail publication designed to NOTIFY YOU OF UPCOMING PROGRAM SCHEDULES AND CHANGES TO OUR MEETINGS AND/OR LOCATIONS.
- ♦ If you are a Chapter member and have not received any of these monthly publications, please contact our Treasurer, Pat DEANNE (accogstreas@gmail.com) to update your e-mail address.
- ♦ If you have problems opening the monthly e-mail publication let us know. Contact our Vice-President, Brian HARTZELL using our Corresponding Secretary e-mail at ACOGSSEC@gmail.com. We want to hear from you.

### DO YOU WISH TO APPLY TO A LINEAGE SOCIETY?

Those interested in applying to one of the Lineage Societies should complete the application by **August 31, 2017**. Application forms are available at the Ashland County Genealogical Society in the Ashland Public Library or at the Ashland County Genealogical Society website. Applicants need not be members of the ACCOGS to apply. There is, however, a \$15 application fee for any applicant. If you have any questions or need help, please contact our Lineage Chairperson who is Marleen APPLGATE (mragenealogy@gmail.com).

<http://ashlandohiogenealogy.org/lineagesocieties.html>

### Requirement for induction into one of the Lineage Societies is as follows:

- ♦ **First Families of Ashland County**  
Proving the applicant's ancestors were living in Ashland County prior to 1850, and there is a direct lineage from the ancestor to the applicant.
- ♦ **Settlers and Builders of Ashland County**  
The pioneer ancestor must have been in Ashland County between Jan 1851 and Dec 31, 1870. Again, there must be a direct line from ancestor to the applicant.
- ♦ **Century Families of Ashland County**  
The pioneer ancestor must have been in Ashland County between January 1871 and December 31 one hundred years prior to application year. (Currently, this would be 1917) There must be a direct line from ancestor to applicant.

**IF YOU HAVE CHANGED YOUR EMAIL** since joining the Chapter, please update it for our mailing list. We may consider offering the Quarterly *Pastfinder* Newsletter as a digital pdf to our members at some point in the future. Nothing has been decided yet, but we want to have the most current email address available.

We are also using the monthly E-Chronicle publication to give you up-to-date information on our meetings and any other changes that may be of importance to our Chapter.

**If you have not received any of the E-Chronicle's this year**, that means we do not have a valid e-mail address for you.

Please contact our Treasurer, Pat DEANNE at accogstreas@gmail.com to

**UPDATE YOUR EMAIL ADDRESS.**

***“If you would not be forgotten, as soon as you are dead and rotten; Either write things worthy of reading, or do things worthy of writing.”*** — Benjamin FRANKLIN, May 1738

**UPCOMING 2017 ACCOGS PROGRAMS:**

(Members and Visitors are welcome to all meetings)

**NOTE:** All meetings will be held at the Ashland Public Library, except our July picnic (this year at Keith & Linda METCAF's home) and the November Lineage Society Banquet which is held at the Ashland **Christ United Methodist Church**. There is no December meeting.

- 16 MAY:** "The Art of Death in the Big Easy"  
by Kara MORROW
- 20 JUN:** "Finding Family Histories Online"  
by Russ POLLITT
- 18 JUL:** **Chapter Picnic/Potluck** –"The Old Log Cabin" at Keith & Linda METCALF home (1422 Rummel Road, Lucas, Ohio; right off St. Rt. 39 between Mansfield and Lucas). Begins at 5:30. Bring a dish and own table service and drinks. More info will be in the E-Chronicle and the Ashland Times Gazette closer to the time.
- 15 AUG:** "The National Highway: A Ride Through Time"  
by Sylvia D. MILLER
- 19 SEP:** "Understanding Your DNA Test Results" by Debra NOWELL
- 17 OCT:** "Haunted Ohio: Witches, Warlocks & Ghosts" by Mary Milne JAMBA (Using genealogical research to illuminate the true stories behind urban legends in Ohio).
- 7 NOV:** **Lineage Society Banquet** "Boots on the Ground, Genealogy Adventures with Miss Peggy" by Peggy CLEMENS LAURITZEN held at the Christ United Methodist Church in Ashland.
- DEC: NO MEETING**

**OTHER 2017 SEMINARS & CONFERENCES**

- Apr 26-29:** **Ohio Genealogical Society, 2017 OGS Conference** "Genealogy Gone Wild" held at Kalahari Resort & Convention Ctr. in Sandusky, Ohio check the [www.ogsconference.org](http://www.ogsconference.org) website for more information.
- May 10-13:** **National Genealogy Society (NGS) 2017 Conference** "Family History Lives Here" held in Raleigh, NC. Presented by NGS and North Carolina Genealogical Society. See website for more information and to register. [www.ngsgenealogy.org](http://www.ngsgenealogy.org)
- Jul 31-Aug 4:** **Researching Family in Pennsylvania** through the Historical Society of Pennsylvania and its partnership with the Greater Philadelphia Area Chapter of the Association of Professional Genealogists, A week-long genealogy course designed to explore and explain the records and repositories available to family historians researching ancestors in Pennsylvania. (Enrollment is limited to 40 persons on a first come, first enrolled basis). See website for more info. <https://hsp.org/calendar/researching-family-in-pennsylvania>
- Aug 30-Sep 2:** **Federation of Genealogical Societies (FGS) 2017 National Conference** in Pittsburgh, Pennsylvania "Building Bridges to the Past" <http://fgs.org/index.php>
- Oct 7:** **2017 ACGSI of Indiana Fall Seminar** at the Allen Co Public Library, Fort Wayne, IN. with CeCe MOORE, (genetic genealogy consultant for the PBS television series Finding Your Roots) More info to follow. <https://www.acgsi.org/>
- Oct 27-28:** **Illinois State Genealogical Society** hosting their ISGS Fall Conference. (see website for more info [www.ilgensoc.org/cpage.php?pt=536](http://www.ilgensoc.org/cpage.php?pt=536))

The Pastfinder is the quarterly newsletter of the Ashland County Chapter of the Ohio Genealogical Society and is issued four times a year. The Newsletter is for you, the members. Please submit articles of interest with name of the newspaper, date, and page number. (We always want to see our sources.) Also, your name as contributor is requested. We look forward to hearing from you.

**WE WELCOME suggestions for input in the newsletter:** Pastfinder Editor, Terry HAUN ([AshOGSeditor@gmail.com](mailto:AshOGSeditor@gmail.com)).



Like us on Facebook

**FIND US ON THE INTERNET:**

Our Chapter website, <http://ashlandohiogenealogy.org>.

Facebook: [www.facebook.com/Ashland-County-Chapter-Ohio-Genealogical-Society-174530202738572/](https://www.facebook.com/Ashland-County-Chapter-Ohio-Genealogical-Society-174530202738572/)

**CHAPTER CONTACT INFORMATION:** Corres. Secretary: [ACOGSSEC@gmail.com](mailto:ACOGSSEC@gmail.com) (OR) Newsletter: [AshOGSeditor@gmail.com](mailto:AshOGSeditor@gmail.com)

We have many published Ashland County research aid books for sale. Visit our web site, <http://ashlandohiogenealogy.org/ashlandbooks.html> , print out the order form and mail in your request to the address on back page.



**PUBLICATIONS ORDER FORM**  
**Ashland County Chapter Ohio Genealogical Society**

MAIL TO: Ashland County Chapter Ohio Genealogical Society  
 P. O. Box 681, Ashland, OH 44805-0681

Bill To:

Ship To:

\_\_\_\_\_  
 \_\_\_\_\_  
 \_\_\_\_\_

Description	* No Disc	Qty	Price	Amount
1847 Ashland County Tax Records - CD			\$11.00	
1849 Ashland County Tax Records - CD			\$11.00	
1915-1920 Farm Journal Ashland Co. Directory Map - CD (see 1915-1920 Farm Journal Directory below)			\$5.00	
1895 Ashland City/County Directory			\$14.00	
1897 Land Ownership Map (includes maps and one-room school house locations)			\$6.00	
1915-1920 Farm Journal Illustrated Ashland County Directory (CD Map to be purchased separately)			\$21.00	
Ashland 175th Birthday Booklet (1815-1990; original lots, land ownership, & maps)			\$2.00	
Ashland Cemetery Burial Records			\$39.00	
Ashland County 1870 Census Index			\$9.00	
Ashland County 1880 Census Index			\$9.00	
Ashland County Church Records Vol. 1			\$19.00	
Ashland County Birth Records, Vol I (1867-1879) (All 3 for \$39.50)	X		\$15.95	
Ashland County Birth Records, Vol II (1879-1886) (All 3 for \$39.50)	X		\$15.95	
Ashland County Birth Records, Vol III (1887-1908) (All 3 for \$39.50)	X		\$15.95	
Ashland County Death Records Vol. 1, 1867-1879			\$15.00	
Ashland County Death Records Vol. 2, Part 1, 1880-1894			\$15.00	
Ashland County Death Records Vol. 2, Part 2, 1895-1908			\$15.00	
Ashland County Genealogical Abstracts of Will Book 1	X		\$9.00	
Ashland County Marriage Records Probate Court Vol. 4 &5, 1870-1886			\$17.00	
Ashland County, Clear Creek Twp., research aid			\$26.00	
Ashland County, Green Twp., research aid	X		\$26.00	
Ashland County, Hanover Twp., research aid	X		\$26.00	
Ashland County, Jackson Twp., research aid			\$23.00	
Ashland County, Lake Twp., research aid			\$15.00	
Ashland County, Mifflin & Milton Twps., research aid			\$27.00	
Ashland County, Mohican Twp., research aid	X		\$26.00	
Ashland County, Orange Twp., research aid			\$32.00	
Ashland County, Perry Twp., research aid			\$18.00	
Ashland County, Ruggles Twp., research aid	X		\$26.00	
Ashland County, Vermillion Twp., research aid			\$25.00	
Ashland: The City of Progress and Prosperity 1815-1915			\$18.00	
Greentown: A Story of 1812 in Contemporary Documents	X		\$11.95	
History of the Ashland Pioneer Historical Society - by Samuel Riddle			\$19.00	
Loudonville Newspaper Death Index 1903-1986			\$28.00	
Rosella Rice (1827-1888) A collection of her stories	X		\$9.37	
Wills, Estates, & Guardianship Records Of Ashland County Probate Court 1852-1887 (Index)	X		\$16.00	
Ashland Women 1815-2015 (notable Ashland, Ohio women); 60 pages, including index	X		\$14.00	

**Sub Total:**

\* Members ONLY may deduct \$1.00 from each title, except where noted above "No Disc":  
 Ohio Residents - add Sales Tax at the rate charged in your county of residence:  
 Shipping and Handling - \$4.00 for one book and \$2.00 for each additional book:  
 \_\_\_\_\_  
 Membership Dues (single - \$15 and family - \$20):  
 \_\_\_\_\_  
 (check payable to: ASHLAND COUNTY CHAPTER OGS) Total Amount Enclosed:  
 \_\_\_\_\_

# THE PASTFINDER

QUARTERLY NEWSLETTER OF THE ASHLAND  
COUNTY CHAPTER, OHIO GENEALOGICAL SOCIETY

Ashland County Chapter  
Ohio Genealogical Society  
PO Box 681  
Ashland OH 44805-0681



RETURN SERVICE REQUESTED

Mailing Label

## Ashland County Chapter of the OGS Lineage Societies

(First Families, Settlers & Builders,  
and Century Families)

Ashland County Lineage Society applications can be printed out from our web site. Go to the ASHLAND CHAPTER link of our website. **August 31 is the yearly deadline for induction.**

Marleen APPLGATE, Lineage Chairman

### ◆ First Families of Ashland County

(FFOAC). Pioneer ancestor must have been in Ashland County prior to 1850.

### ◆ Settler's & Builders Of Ashland Co, OH

(SBOAC). Pioneer ancestor must have been in Ashland County between January 1851 and December 31, 1870.

◆ Century Families (CFOAC). Pioneer ancestor must have been in Ashland County between January 1871 and December 31 one hundred years prior to application year.

### Newsletter Mailing

Terry HAUN / Holly TAYLOR

## Chapter Membership

Ashland Chapter OGS Membership

\$5-Student; \$15.00-Single;

\$20.00-Family (one address)

Life—\$150.00 (S) or \$225.00 (F)

Send to **Patricia J. DEANE, Treasurer**

1717 State Route 511, Ashland, Ohio 44805

Membership year is January -December

**Applications can be found at our website**

## Chapter Meetings

The Ashland County Chapter of the Ohio Genealogical Society meets the **third Tuesday of each month at 6:30 pm** in the lower level meeting room of the Ashland Public Library, 224 Claremont Ave., Ashland, Ohio. Program at 6:30 pm (approx. 1 hour); Chapter business meeting immediately follows. Chapter meets at the Library location all months except July (annual Picnic), November (Lineage Banquet held by reservations only), and no meeting in December. Meeting will be cancelled if schools are closed due to inclement weather. All meetings are free and open to public.

## Library Volunteers

(Volunteers available to help you with research in the library at these times)  
(Karen HISSONG, Volunteer Coordinator)

- \* 1st Tues of month 7-9 pm
- \* 2nd Thurs of month 1-3 pm
- \* 3rd Tues of month 5-6 pm  
(before chapter meeting)
- \* 3rd Sat of month 10-noon
- \* 4th Thurs of month 1-3 pm

### \* APRIL

4 (Tues) = 7-9  
13 (Thurs) = 1-3  
15 (Sat) = 10-noon  
18 (Tues) = 5-6  
27 (Thurs) = 1-3

### \* JUNE

6 (Tues) = 7-9  
8 (Thurs) = 1-3  
17 (Sat) = 10-noon  
20 (Tues) = 5-6  
22 (Thurs) = 1-3

### \* MAY

2 (Tues) = 7-9  
11 (Thurs) = 1-3  
16 (Tues) = 5-6  
20 (Sat) = 10-noon  
25 (Thurs) = 1-3

### \* JULY

4 (Tues) = 7-9  
13 (Thurs) = 1-3  
15 (Sat) = 10-noon  
18 (Tues) = 5-6  
27 (Thurs) = 1-3

Ashland County Chapter OGS website  
<http://www.ashlandohiogenealogy.org>  
Sheila HELSER, webmaster

*The Ashland County Chapter OGS is a non-profit 501(c)3 organization; donations to the Society are tax deductible. Your gifts help us buy books for the library, acquire speakers for our programs, and provide the means to publish our books. Our new digital equipment and imaging projects would not be possible without your kind support.. Consider a gift above and beyond your annual membership fee. To help preserve the records left by our Ashland County pioneers.*