



# The Pastfinder



VOLUME 42 ISSUE 1

<http://ashlandccogs.org>

JAN, FEB, MAR 2023

## 2023 Chapter Officers / Committee Members

- President: Tammy SLOAN PELTON
- Vice-Pres: (vacant)
- Recording Secretary: (vacant)
- Treasurer: Linda FULK
- Corresponding Secretary: Carolyn AMSTUTZ
- Senior Trustee: Barb RENNEKER
- Intermediate Trustee: Tom NEEL
- Junior Trustee: Marge YETZER
- Librarian: Ginny FEIBER
- Newsletter Editor: Terry HAUN

\* \* \* \* \*

As a chapter member, please consider volunteering as a committee member or elected officer next election. This helps Support the Society as a whole. (Check the By-laws under the "About Us" Section of our website for more details.)

## INSIDE THIS ISSUE:

2023 Chapter Officers	1
President's Message	2
37th Lineage Banquet Pics	3
EBERHART Legacy	4-5
Organizing Your "Stuff"	6
One-Room School	7-8
I'm My Own Grandpa	9
Community Hap'nings	10
Leaving Stones at Grave	11
Did You Know? / Genealogy Tips	12
Chapter News/New Members/Volunteers	13
Library Info	14
Upcoming Programs, etc.	15
Chapter Info / Contacts	16

*Welcome To A New Year - 2023*

*Genealogy Isn't Just A Pastime; It's A Passion!*

As we begin our new year with you, our Genealogy Members, we want you to know that we are here to support you and help you with your Challenges...your Goals...and your Genealogy Skills, Let Us Help

## Please meet Your New Chapter Officers for 2023 !



**L. to R.: Linda FULK, Barb RENNEKER, Carolyn AMSTUTZ, Tammy SLOAN PELTON, Tom NEEL, Marge YETZER**

(At present we are still looking for a Vice President and a Recording Secretary. If anyone would be willing to help us fill these vacancies, please contact our President, Tammy SLOAN PELTON at [accogspresident@gmail.com](mailto:accogspresident@gmail.com).)

*See page 3 for more pictures from our Lineage Society Banquet*

## Did You Renew Your Membership for 2023? -

Check your **mailing address label**. If it does **NOT** have [23] after your name, then we have **NOT** received your renewal.



## P R E S I D E N T ' ' S M E S S A G E

Tammy SLOAN PELTON, Chapter President



Dear Members,

I am extremely grateful for the opportunity to serve as the Ashland County Chapter, OGS President for the year 2023. I am excited to get started and hit the ground running with your support. I am open to advice, criticism, and ideas.

Please join me in carrying our chapter's mission statement of "Encourage the collection and preservation of genealogical and historical records about early settlers of Ashland County and make them available to all interested people". I hope you find I am a 'people-person' and like to have fun with my passion of learning about my family heritage.

I hope I am contagious, and you are as excited as I am as we learn, preserve, and record our Ashland ancestors. Now let's get digging!

Sincerely,  
 Tammy Sloan Pelton  
 ACCOGS President  
 accogspresident@gmail.com  
 419-651-9236

The **OGS Conference** is just about two months away. It's scheduled for April 26 through the 29th (Wed-Sat) and held at the Kalahari Resort and Convention Center in Sandusky, Ohio. If you haven't registered yet, consider what a great adventure this would be to get your Genealogy kick-start for the year. There is much available to learn about your ancestor's immigration and migration patterns, so why not utilize these learning sessions and workshops to help you by using case studies, tools to understand the process and where to find them, and methods to help you. And don't forget all the speakers who will be helping you along the way; like Cheryl BROWN ABERNATHY, James BEIDLER, Debbie BERGHEIMER, Christina DRAIN, Debbie KITKO, Peggy Clements LAURITZEN, Sunny MORTON, and many more. You'll definitely come away recharged!



Check the OGS website to see what programs are available and start making your plans....

It's still not too late.  
 But remember  
 Early Bird Registration  
 ends March 17 and  
 final day to register  
 online is April 14.

[www.ogsconference.org](http://www.ogsconference.org)

### 37th Annual Lineage Society Banquet-Ashland County, Ohio Chapter OGS

Our 37th Banquet was held on Tuesday evening, November 8, 2023 at the FREER Home (one of the several Ashland Historical Society homes). This was our first time having it in this historical home and, sadly, our last time to have it catered by Fergy's On Main who has served their signature cheesecake dessert. Our Volunteers were recognized and honored and the Chapter Officers were installed by OGS Trustee, Cheryl BROWN ABERNATHY. Afterward, we listened to Ed KRAKORA and Jennifer MARQUETTE entertain us with "An Evening with Jonas and Mary FREER." There were no new Lineage Inductees this year. This was our first Banquet at a "hybrid" (meaning virtual and in person) with a little over 30 members in attendance.



Ed KRAKORA and Jennifer MARQUETTE in character as Jonas & Mary FREER



Just some of our many Volunteers

Cynthia BECKER, Linda FULK, Barb RENNEKER, Deanna APPLGATE, Linda COLLINS, Ginny FEIBER, Myron ANSTUTZ, Terry HAUN, Tom NEEL, Marleen APPLGATE, Virginia SCHUCK

Volunteer Picture provided by Stephanie PELTON SANDERS

## URIAH EBERHART'S LEGACY — PRESENT DAY

*(Continuation from The Pastfinder, Vol. 41, Issue 4)*

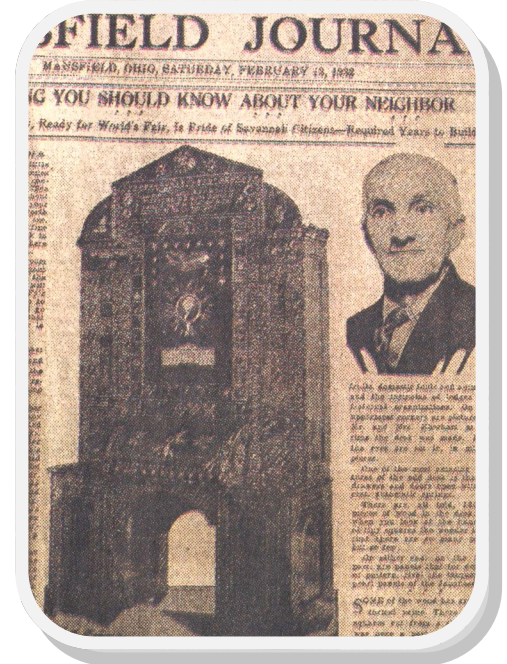
The pictured piece of furniture which stands 8 feet tall was built by one man, Uri EBERHART over a period of a little less than four years between 1896 and 1900. Uri EBERHART's story and the details of his one-of-a-kind Secretary have been detailed in the last issue of the newsletter "Uriah EBERHART's Legacy" on page 56-57. However, as mentioned in the previous article, there is more to this fascinating story. Uri died in 1937 and it is assumed it was handed down to family members who safeguarded this precious heirloom over the decades.

Fast forward to 2002 and we find the Secretary in New Jersey. In 1963 the Secretary left Ohio and was shipped (yes, with the same crate that Uri had built for it) to Uri's son, Dr. Dale EBERHART's home in Middlesex, New Jersey. There the huge piece of family history would stay in the EBERHART family home even after Dale passed away in 1977.



Close-up of the center panel showing the intricate pieces of wood to create the Eagle, Starburst with G. WASHINGTON, and the White House using many of the pieces of wood from over 30 countries around the world. The numerous newspapers regarding the Secretary detail the many types of woods that were used and their historical significance to the U.S. —

Picture from *The Home News Tribune, New Brunswick, NJ;*  
19 May, 2002, page A5



But by the 21st century there were discussions of how best to honor their ancestor and his plan for the EBERHART Secretary. The family decided, "there's just too many great-grandchildren in the family now" to hand it down, stated one of his grandchildren.

Uri had always been a self-promoter and wrote elaborate advertising of the Secretary-Bookcase when he displayed it at the county fairs. In the mid 1930's he mentioned that he dreamed of selling his masterpiece for \$100,000 and hoped it would be on a permanent display somewhere so all could see it's beauty and design.

And then, in 2002, a little over one hundred years after Uri EBERHART created his lasting legacy, the family made the ultimate decision to sell this family heritage to somewhere that might appreciate it's one-of-a-kind status.

**P**eople told us, 'if you're going to sell it, Sotheby's is the place to do it.' The catalog is so upscale. The section on furniture opens up with a picture of the secretary, and it's the last piece in the auction. (Uriah Eberhart) would be very proud it was being auctioned off at Sotheby's. It looks like a million dollars in the catalog, but of course, we're prejudiced.

**Connie Nicolay**

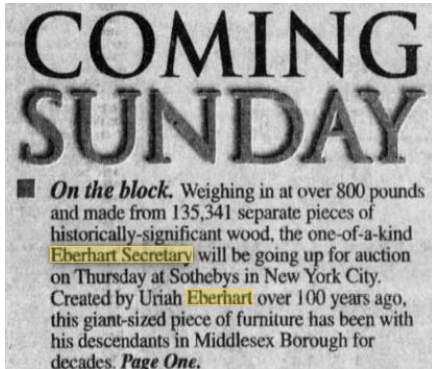
GRANDDAUGHTER OF URIAH EBERHART

*(Cont'd on page 5)*

*Eberhart Legacy - Con't from page 4)*

The mammoth piece of furniture was once again crated back up and shipped to New York City to be auctioned at the renowned Sotheby's Auction House.

On May 23, 2002 The EBERHART Secretary was to be sold at auction and was the featured attraction at Sotheby's Auction House in New York City. In their published catalog for the auction they describe it as "one of the world's most elaborate pieces of inlaid furniture" and placed a pre-bid estimate of \$70,000-100,000 for the item. Below is the pictured item listed in the catalog.



The Central New Jersey Home News  
(New Brunswick, NJ)  
Fri, 17 May 2002; page 55

### **SOLD TO THE HIGHEST BIDDER!**

On May 23, 2002 at the prestigious Sotheby's Auction House in New York City, the EBERHART Secretary was SOLD to the highest bidder

Robert HIRSCHHORN, a noted collector of American Folk Art was the winning bid who bought it for \$130,000. As quoted in the news article "HIRSCHHORN intends to display the EBERHART Secretary at the American Folk Art Museum in New York City where he is a member of the museum's board of directors".

So it would seem that Uri's dream of selling his Secretary and having it on permanent display at a museum or similar has come true. The family indicated they were sad to give up the Secretary but excited they found a good home for it.



From the Sotheby's Auction House Catalog

### **SOURCES:**

- The Courier-News Newspaper (Bridgewater, NJ; Sunday, May 19, 2002, page 23)
- Home News Tribune Newspaper (New Brunswick, NJ); Sun, May 19, 2002, page 1 & A4-5)
- Central New Jersey Home News Newspaper (New Brunswick, NJ; Sat, May 25, 2002, page 13)
- My thanks to Barb HART and Judy EMMERICH (descendent) for sharing this story and some of the news articles.
- Sotheby's Auction House: 2019 marked the 275th anniversary of the company's first auction, on 11 March 1744, in London, U.K. at Exeter Exchange on the Strand [www.sothebys.com/en/about/our-history](http://www.sothebys.com/en/about/our-history)

## ORGANIZATION – BEGINNING IS THE FIRST STEP - Part I

(By Terry HAUN)

Several years ago our chapter had a program on Organizing your Genealogy and this was my hand-out. I felt it was worthwhile to review again,. This is a guide only, as each person has to feel comfortable with their own method of Organization.

**BEGIN ORGANIZING** - Organizing your genealogy is not a short weekend project. It's actually a mindset that may take several years to get it where you want it. The key is to START. You can't go on a journey unless you BEGIN. Then you want to establish periodic goals along the way. Focus on something specific and give yourself a realistic time limit to complete it, and then move to the next. When trying to establish a new habit, a mistake that many people make is too many changes at once. Make your changes a little at a time. Once you are comfortable with one change, you can then decide what your next organizational change will be. Remember, good habits take time and perseverance.

**YOUR OWN METHOD** - Every genealogist will organize their files, records, and family treasures differently than the next genealogist. Don't feel you have to conform to someone else's method. But, we can all use ideas and suggestions to help us develop our own plan to organize. Remember, no Organizational Plan is perfect; it's what works for you that matters. It's possible that your method will change over time as you progress with your strategy.

**DEVELOP A PLAN** - For an organized system to be successful, it needs to be simple. A simple system should be easy to learn, easy to remember, and easy to use. It should work with your normal way of doing things. Therefore, the plan needs to be flexible enough that you can customize it to fit your personal way of doing things; and goals should be something you can implement in stages. Change is inherently stressful. By making small changes over time, you can keep your stress level low. Too many changes too quickly can cause you to revert to the way you used to do things. Even with a small research project, you may get pulled off that project onto another one that requires immediate research. Do you file that first project and start with the second, work both of them at the same time, or record information now to research later. Decisions, decisions, decisions. You all know how this ends; too many loose ends that either don't get done or put on a shelf to collect dust... actual dust. You need to establish something that works for you or you'll end up with a bunch of piles of paper that never get looked at...or forgotten what you've already done.

**DON'T KEEP EVERYTHING** - If you are a genealogist, you might be a packrat!!! If you ARE a packrat, you are going to have a more difficult journey with this plan. Something to keep in mind as you review this step is try to visualize if you had to clean out a relative's home of their things (stuff) what would you think was important to keep? Usually if you or someone else is the person "cleaning out", you will not have the same interests, meaning what is a treasure to one person will be "junk" to someone else. How do you want your "stuff" disposed of? After my mother passed away a few years ago, I was tasked with going through her "stuff". If only she had recorded the information and why she was keeping it.

Obviously it was important to her, but not to me because I didn't know the history of the item. Keep what is important to you or your children. Remember it will go to them someday. And remember, what is important to you, may not be to them.

**RECORD YOUR FAMILY TREASURES** - Organizing does not mean you have to get rid of your family treasures, but it should mean consider making a record of what these things are, scanning the copies or taking pictures. If you have something from your past or your parents or grandparents past, look at this item and re-evaluate what value it will have for the next generation. Is this something that you need (or want to) keep or is it something you want to photograph and record what it means to you or your genealogy. This will be different for each of you. You can record it via video or word processing. (Many of the heirlooms that have been handed down over the years mean something to you but will not to the next generation if they don't know what it is or who owned it or how old it is. One way is to take a picture of it, insert the picture into a word document and type up a paragraph or two of what it is, where it came from, who owned it, and possibly even a story of the heirloom's use or how you got it). Those precious heirlooms that you have inherited and have in safekeeping should be scanned or a photograph taken and saved as a digital copy. You can keep the original in your safeguarded method and you can pull up your digital copy anytime you need to review its content.

**DONATE BOOKS, PERIODICALS** - If you have books or periodicals that you use for research, consider if a copy of it has been digitalized (there are several locations online that have done this). If so, you may want to download a digital copy (which usually has the perk of being searchable). You can then decide if donating the hard copy is feasible for you. (The OGS has all of their five journal publications online from the beginning of each journal. You can either view them online or download them to your computer). One thing to keep in mind, you may find a digital copy online but in a year or so it may not be there; downloading a digital copy makes sure you have your own copy. (See the end of article for some online locations for digital books and periodicals).

**PURCHASES THAT HELP YOU ORGANIZE** - You may want to make certain purchases along the way to help you achieve some of these goals. It may be a software program to organize your tree or a scanner to organize your pictures and newspaper clippings, archival sleeves for pictures and documents, and other archival supplies. (If you do not want to purchase a software program, you may consider one of the free online trees. There are several, including [www.familysearch.org](http://www.familysearch.org).) However you need to know that nothing is guaranteed to be permanent; software programs come and go and even online sources may be removed from the internet after a period of time.

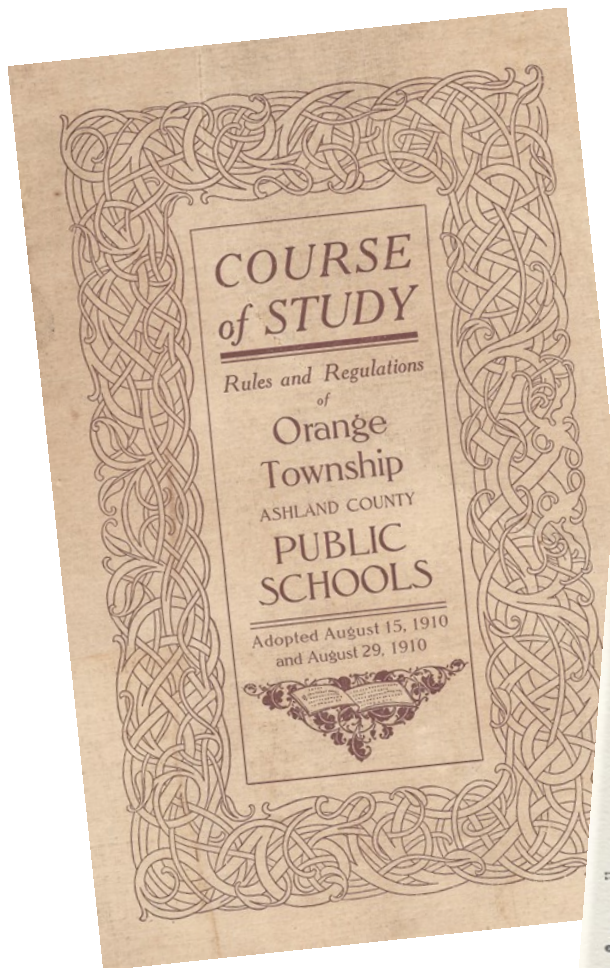
*(Part II—to be continued in next Newsletter)*

# ONE-ROOM SCHOOLHOUSE

(By Peg KERR)

Well the kids are all back to school now after the holidays. School days are much different today than when my mother taught in a one-room schoolhouse. She was responsible for every aspect of the school from starting the fire in the morning to cleaning up at the end of the day. She was required to meet the needs of the kids in her care from 4 or 5 year olds to 15 or 16 year olds. As a former teacher it is hard to fathom why anyone would have taken on the job. In the 19th century teachers were mostly male partly because school boards thought men were better suited to handle unruly farm boys. But by 1900, 70 percent of teachers were women whom school boards could get away with paying less. Of course once a woman was married, she no longer qualified for the job. Many girls started teaching as soon as they passed their eight grade tests. Their pay included room and board provided by the parents of their students and that could mean they might share a bed with one of their students. A good salary was \$30 or \$40 a month.

According to a 1910 Course of Study for Orange Township Rule and Regulations, a typical day should look like this:



### Suggestive Study and Recitation Programme

CLOS- ING.	MIN- UTES.	PRIMARY.	INTERMEDIATE.	GRAMMAR.
9.10	10		<b>Opening Exercises</b>	
9.35	25	Seat Work	Arithmetic	Arithmetic
10.00	25	Number Work	Arithmetic	Geography
10.20	20	Number	Geography	Geography
10.40	20	Form Work	Geography	Geography
10.55	15		<b>Intermission</b>	
11.15	20	Silent Reading	Geography	Grammar
11.35	20	Reading and Spelling.	Map Drawing, Etc.	Grammar
12.00	25	Excused from School.	Reading	Grammar

### NOON INTERMISSION

1.10	10		<b>Singing</b>	
1.30	20	Form Work	Reading	Reading
1.50	20	Silent Reading	Seat Work	Reading
2.10	20	Reading and Spelling.	Language	{ History and Physiology
2.35	25		<b>Writing and Language</b>	
2.50	15		<b>Intermission</b>	
3.10	20	Number work	Spelling	{ History and Physiology
3.35	25		{ Physiology, Hygiene, Effects of Alcohol and Narcotics	
3.50	15	Excused from School.	Spelling	Spelling
4.00	10		Arithmetic	Spelling

Heavy Type indicates class work and ordinary type study work.  
The teacher should make any changes in the Programme necessary to fit the conditions of his school.

12

Our Chapter Genealogy Library has a notebook of the one-room schools in Ashland County with names of students and teachers in those schools. The 18 schools listed are:

Addisonian Hall Montgomery (1923, 1922, 1924)	Pifer (1922, 1923, 1924)
Albert #6 (1923, 1924)	Proudfit (1922, 1923, 1924)
Anderson Milton Twp. #5 (1922, 1923, 1924)	Riddle (1922, 1923, 1924)
Fraunfelter #5 (1922, 1923, 1924 (Found some relatives in this school)	Roland Milton Twp (1922, 1923, 1924)
Milton Twp #2 (1923)	Sherradden (1922, 1923, 1924)
Nelson Milton Twp. (1922, 1924)	Snooks School (1923, 1924)
Nelson (1923)	Sugar Grove (1922, 1924)
Old 16 Montgomery Twp (1923, 1924)	Thomas #7 (1922, 1923)
Paradise Hill (1922, 1923, 1924)	Wartan Milton Twp (1922, 1924)

Cont'd on page 8

## ONE-ROOM SCHOOLHOUSE (Peg KERR) - *continued from page 7*

According to Betty PLANK's "Historic Ashland County", there were 11 one-room schoolhouses in 1914. Addisonian was one of those schoolhouses. It was the first "public" school building, being erected in 1850. In the 1912-13 school year 14 pupils were enrolled in grades 1-8. The teacher was Gloe Jean RIDDLE. Classes continued at this school until 1939.

Anderson School is listed on the National Register of Historic Places. It is located on US 42 across from where the WNCN radio station used to be. In 1930, my mother, Beulah WESTERFELD (I'm using her maiden name as she was not married when she taught) was the teacher at the Blooming Grove Twp. School in Northern Richland County. Below is my mother and the school where she taught. Of course it is no longer a school but this is what it looked like in 2000.



### COST OF LIVING FOR 1938

*(Remember this was during the Great Depression which hit hardest from about 1929 for roughly 1939)*

When trying to put our ancestors in an historical setting, we also need to consider the economy and the political environment. The cost of living for 1938 gives us a hint of what our ancestors were experiencing just trying to survive day to day during the Depression.

**Loaf of Bread** - 9 cents.  
**Hamburger** - 13 cents a pound  
**Pork Loin Roast** - 15 cents per pound  
**Sugar** - 59 cents for 10 pound bag  
**Milk** - 50 cents a gallon  
**Ground Coffee** - 39 cents a pound  
**Eggs** - 18 cents a dozen  
**Bacon** - 32 cents a pound  
**Liptons Noodle Soup** - 10 Cents  
**U.S. Postage Stamp** - 3 cents each

**Gasoline** - 10 cents per gallon (even if they didn't own a car, they probably had farm machinery that required gasoline).

**House Rent** - \$27.00 per month  
**New House** - \$3,900-\$5,000 (average)  
**New Car** - \$700-\$860 (average)

**Wages** - For laborers, the average wages per year was around \$1,730.

**\$100 in 1938 would equate to \$2,104.94 today**



### GENEALOGISTS LAUGHTER

- My New Year's Resolution is to stop procrastinating; but I'm not starting till next week !



## I'M MY OWN GRANDPA

(A Song that's a Genealogy Nightmare)

The song became a hit in the 1940's so if you've never heard of it, it means you're not old enough to have heard the original group. In the 1930s, Dwight LATHAM had a group, the Jesters, on network radio; their specialties were bits of spoken humor and novelty songs. One version of the story is while reading a book of Mark TWAIN anecdotes, Dwight found a paragraph where Mark TWAIN proved it would be possible for a man to become his own grandfather. ("Very Closely Related" appears on page 87 of Wit and Humor of the Age, co-authored by Mark TWAIN in 1883.) In 1947, LATHAM and Moe JAFFE expanded the idea into a song, which became a hit for a group called Lonzo and Oscar. They were part of the Grand 'Ol Opry (Lloyd GEORGE (1924-1991) as "Lonzo" and Rollin "Oscar" SULLIVAN (1919-2012)). It became so popular that several well-known country singers have made their own rendition of this novelty song. Many movies have even paid tribute by using parts of the song within the movie. Further back in time another story surfaced where Christopher DUNHAM discovered the tale in an 1822 American newspaper, republished from the London Literary Gazette. The Hood's Magazine reprinted the article, which found its way to a Gettysburg newspaper in 1848.



### I'm My Own Grandpa !



Many, many years ago when I was twenty-three  
I was married to a widow who was pretty as could be.  
This widow had a grown-up daughter who had hair of red.  
My father fell in love with her and soon they, too, were wed.

This made my dad my son-in-law and changed my very life  
For my daughter was my mother, 'cause she was my father's wife.  
To complicate the matter, even though it brought me joy  
I soon became the father of a bouncing baby boy.

My little baby then became a brother-in-law to dad  
And so became my uncle, though it made me very sad  
For if he was my uncle, then that also made him brother  
To the widow's grown-up daughter, who, of course, was my step-mother.

My father's wife then had a son who kept them on the run  
And he became my grand-child, 'cause he was my daughter's son.  
My wife is now my mother's mother, and it makes me blue  
Because, although she is my wife, she's my grandmother too!

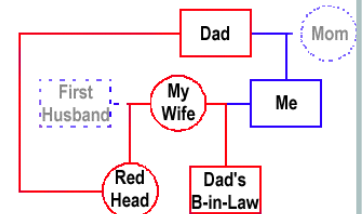
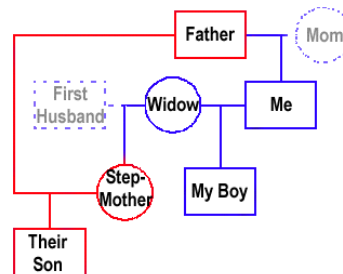
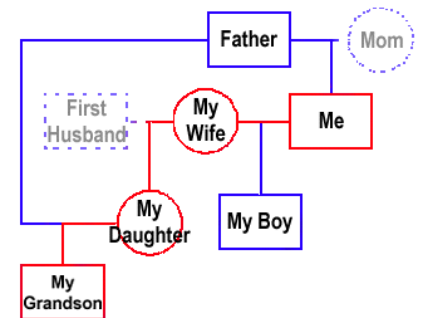
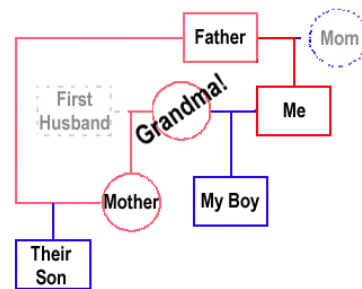
If my wife is my grandmother, then I am her grandchild  
And every time I think of it, it nearly drives me wild  
For now I have become the strangest case you ever saw  
This is got to be the strangest thing I ever saw,  
As husband of my grandmother, I am my own grandpaw!

Chorus

I'm my own grandpaw; I'm my own grandpaw  
It sounds funny I know, but it really is so  
Oh, I'm my own grandpaw.



*Others have tried to make their diagram;  
are you following with yours?*



### Links and Sources:

- **Link to song by Ray STEVENS** (there are many others, but I like this one)  
[www.youtube.com/watch?v=1vzIebtFshk&ab\\_channel=RayStevens](http://www.youtube.com/watch?v=1vzIebtFshk&ab_channel=RayStevens)
- **I'm My Own Grandpa**, [http://en.wikipedia.org/wiki/I%27m\\_My\\_Own\\_Grandpa](http://en.wikipedia.org/wiki/I%27m_My_Own_Grandpa)
- **Wit and Humor of the Age.**, Mark Twain 1883. p.87.  
[https://books.google.com/books/about/Wit\\_and\\_Humor\\_of\\_the\\_Age.html?id=efcOAAAAYAAJ](https://books.google.com/books/about/Wit_and_Humor_of_the_Age.html?id=efcOAAAAYAAJ)
- **I'm My Own Grandpa – Where Did the Tale Begin?** [www.genealogymagazine.com/im-my-own-grandpa](http://www.genealogymagazine.com/im-my-own-grandpa)
- **Link to song I'm My Own Grandpa by the Jesters** on Internet Archive. <https://archive.org/details/ImMyOwnGrandpa>

# C O M M U N I T Y H A P P E N I N G S

## MRS. MARY BURNETT DIES AT AGE 67

Mrs. Mary Minerva BURNETT, 67, of Polk R.D. No. 1 died Saturday morning at the home of her son Hugh BURNETT of Warren as the result of a heart attack.

She was born in 1871 in Marion county; the daughter of John and Mary STOSE and

had lived the past 14 years at the residence north of Rowsburg. On March 1, 1896 she was married to Elihu L. BURNETT who preceded her in death on February 2 of this year.

Surviving are four sons, Glen of Courtland, Hugh of Warren, Arthur of Warrendale, Pa., and Elton BURNETT of this city; two stepsons Ray BURNETT of Lima and Alvin of Warren; one stepdaughter, Mrs. Marion ROLLER of Polk.

Other survivors are one sister, Mrs. Emma MOORE of Whiting, Indiana, and four brothers, Will, Ben and Charles STOSE of Spencerville, Ohio and Al STOSE of Van Wert. One brother and two sisters preceded her in death. Mrs. BURNETT was a member of the Ladies Aid of the church.

Funeral Services will be held at the Shaw Funeral Home tonight at 7:30, with Rev. GRANT of the Jeromesville Methodist church officiating. Tuesday morning the body will be taken from the funeral home to the Converse, Olive M.E. church, Van Wert county, where it will lie in state from noon until 1:30 p.m. when regular services will be held. Burial to be made in the Wright Cemetery.

*(Ashland Times Gazette, 14 Feb. 1938)*

## MRS. J. W. REIFF DIED at OAKLAND, CALIF. *(Elizabeth Jane WANDELL REIFF)*

Relatives at Hayesville are in receipt of the sad news of the death at Oakland, Calif., of Mrs. J.W. REIFF, who had been in ill health for some time yet whose demise came with startling suddenness.

She has many old time friends in Ashland and vicinity who will be greatly grieved to learn of her death. She leaves her husband and four sons to mourn her death, besides a host of friends and relatives. Two of her sons reside in Oakland and one in Wichita, Kansas and one in Paris, France. Mr. REIFF was in very poor health after Mrs. REIFF had passed away, but is some better at this writing.

Mrs. REIFF was born near Wooster, Ohio, in March, 1849. Her maiden name was Elizabeth WANDEL. She was a woman of noble character, known for her kind acts and good deeds, also a loving wife and a kind mother. She was laid away in the beautiful Mountain View cemetery, San Jose, California, by the side of her daughter, Mamie, who preceded her in death several years ago.

*(The Ashland Press, May 2, 1917, pg 8)*

## Mrs. J.F. BASHFORD DIES

*(Laura V. FRANKLIN BASHFORD)*

Mrs. J.F. BASHFORD was born in Carlisle, Pa., Feb. 7, 1860, and died in Polk, Ohio, Nov. 8, 1918, aged 58 years, 9 months and 1 day. Her parents came to Ohio when she was seven years old and located in Ashland county.

She was married to Joseph BASHFORD at Galion, Ohio March 17, 1889, and to them were born four daughters, Mrs. David SCHUCK, Mrs. Dwight SHEETS, Mrs. Lloyd SIGLER and Helen Pauline, who died in infancy.

She united with the United Brethren church when but a young woman and has been a devoted Christian all her life. She had a kind and loving disposition and was a devoted wife and mother. She also was a devoted mother to two orphaned children, namely, Mrs. HEFFELFINGER of Ashland and Mrs. John O'DOWD of Trenton, N.J., whose mothers died when they were infants.

She belonged to the Lady Maccabees and the Daughters of Liberty of Galion, Ohio. Besides her husband, daughters, two grand children and brother, she leaves a host of friends to mourn her death.

Her funeral took place at her late home one mile north of Polk, Nov. 9, 1918, conducted by the Rev. CALENDER, pastor of the United Brethren church of Galion, Ohio. *(A very long poem follows the obit; not recorded here).*

*(The Ashland Press; Nov. 20, 1918)*

## - BITTIKOFER-CAMPBELL Wed -

*(Bucyrus Evening Telegraph, Sat, 19 June 1920, page 3)*

The Lutheran parsonage at Perrysville, Ohio, June 17th was the scene of a pretty home wedding when Bertha M. CAMPBELL became the bride of Arthur L. BITTIKOFER of Sulphur Springs.

At 4 o'clock, the bridal party descended the stairs to the strains of MENDELSONH's wedding march played by Miss Lucy CAMPBELL. The impressive ring ceremony was used, with Rev. E.E. CAMPBELL, father of the bride officiating. The ceremony was performed under a beautifully decorated arch of ferns and roses, John F. ULMER acting as best man and Miss Mary CAMPBELL as bridesmaid.

The bride was attractively attired in a creation of white satin and silk lace and the bridesmaid wore pink organdie. After the ceremony, the bride and groom led the way to the dining room where a wedding supper was served.

Mr. BITTIKOFER is a graduate of Bucyrus high school, class of 1916, and later attended Heidelberg University. Mrs. BITTIKOFER was graduated from Bucyrus high school, class of 1917, and later taught school at Red Run and Mt. Zion.

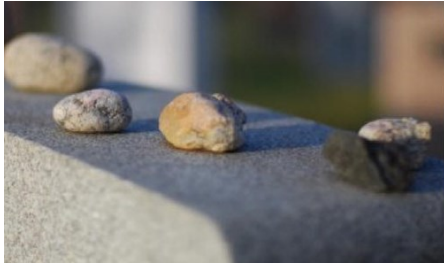
After an extended wedding trip to Morrow and Knox counties, they will be at home in Sulphur Springs where both have a wide circle of friends to wish them happiness.

Out of town guests were Mr. and Mrs. J.W. BITTIKOFER, Bruce CAMPBELL and John ULMER of Sulphur Springs and Miss Ethel LYONS and Miss Mary CAMPBELL of Bucyrus.

*(my thanks to Linda METCALF for sharing this wedding tidbit)*

## WHAT DOES LEAVING A STONE ON A GRAVE MEAN ?

Have you ever visited a cemetery to find a family grave and found a stone or a coin had been laid on the headstone? What does that mean? So glad you asked!



A Jewish tradition that dates back into biblical times is the placing of stones on a loved one's grave. These people in generations past had memorialized their loved ones by stacking stones (cairns) on top of the grave to mark the burial and protect it from wild animals. Over hundreds of years, this tradition has carried through into today in many other cultures with many different symbolic reasons, either to honor the dead or protect the soul from harm. (An example of this custom can be seen in the movie "Schindler's List". Near the end of the movie, the people that he saved visit his grave and each are shown placing a stone upon it.)

This basic concept is still honored today by the laying of smaller stones or rocks on the memorial to mark their visit and to let others know that their loved one has been visited, grieved and prayed for by others. The placing of the stone can bring comfort to family and friends to know they aren't the only ones missing and honoring their loved ones. Though an ongoing tradition of laying flowers on the grave is still very much in vogue (just see a cemetery at Memorial Day), stones on a gravestone or

memorial represents a loved one's memory and legacy which can last forever. When leaving a small stone on the memorial stone, you are saying -

"I was here; I am honoring you; I will remember you."

Stones are not the only thing which might be left at the gravesite. Sometimes something is left that represents the deceased persons' hobby or passion in life. Such as statues, sea shells, marbles ...sometimes even their birth stone...or even various denominations of coins. Coins have risen in popular use after the Vietnam War, with various denominations meaning different things. However, the tradition of leaving coins on the headstones of military men and women can be traced to as far back as the Roman Empire.



Pic provided by Tammy Pelton

**Whatever method and reasoning you choose, it is a beautiful way to remember our deceased loved ones.**

By Terry HAUN and Tammy SLOAN PELTON

## NEW TO GENEALOGY - JUST STARTING OUT ???

This is my personal, satirical Genealogy Thought for the Day -

By Terry HAUN

Genealogy is NOT for the "faint of heart". It is not done in a day or two; definitely not as you see on television. So if you are beginning your Genealogy Family Tree, remember this is a journey. It can be as short or as long as you desire. ....But, just keep in mind... that if you "get the bug"... it WILL be for a lifetime.!

As Genealogists we deal in FACTS!... Well, I guess we also deal with family STORIES!... Oh, and within these stories, I guess we deal with MYTHS and trying to prove or disprove those Myths. Truth be told we also deal with HISTORY, knowing how our families lived within the History of their own Time period. We also have to know GEOGRAPHY and how the LAND might have changed Counties, Cities, States, and even Countries (sometimes, without ever moving from an actual location.) And, we deal with LEGAL Terms and documents, knowing the LAWS of the time in HISTORY and the Country or State or City. Oh, and don't forget trying to read the HANDWRITING and TERMS used within the time period in HISTORY. We need to understand CULTURES and how it affected our ancestors and their IMMIGRATION and EMIGRATION patterns. And speaking of immigration, we need to understand MIGRATION patterns within these CULTURES. To help with the creation of the family structure, we also need to understand NAMING patterns, including SURNAMES and BURIAL customs and practices. We learn to SOURCE our findings in a way that will stand the "test of time" and others can understand. We also want to WRITE our own STORIES for future generations.

**WOW, now that I think about it -  
GENEALOGISTS ARE RIGHT UP THERE WITH SUPERMAN OR WONDER WOMAN !**

## DID YOU KNOW ???

**THAT** - Have you ever wondered what your SURNAME means. Of course in reality that varies depending on the spelling of the name and the place of origin. However as a fun tool FamilySearch has a page that helps you define the name and possible origins of the Surname. [www.familysearch.org/en/surname](http://www.familysearch.org/en/surname)

**THAT** - Ohio Auditor office has a couple of pdf booklets that can be helpful in understanding public lands of Ohio. One is "The Official Ohio Lands Book" and the other "Along the Ohio Trail". Both can be found on their website at: <https://ohioauditor.gov/resources/studentcenter.html>

**THAT** - The Ashland County Historical Society posted a YouTube video about one of the daughters of P.A. MYERS. Here is the link to "The Little Girl Who Fell to Her Death".  
[www.youtube.com/watch?v=kbh26CECq7w&ab\\_channel=AshlandCountyHistoricalSociety](http://www.youtube.com/watch?v=kbh26CECq7w&ab_channel=AshlandCountyHistoricalSociety)

**THAT** - Are you researching Hessian Soldiers from the American Revolution timeframe? Several thousand Germans came to America during the Revolutionary War as soldiers.....and never left. FamilySearch may be able to help. They have 9 short video classes that will assist your research and the HETRINA database. There is also a handout. The website: [www.familysearch.org/en/help/helpcenter/lessons/hessian-soldiers-soldier-biographies](http://www.familysearch.org/en/help/helpcenter/lessons/hessian-soldiers-soldier-biographies)

### - Genealogy Tips, Tricks, & Techs -

*(As genealogists we are all at different levels of our research. Some are beginners trying to learn the ins and outs to properly research, some are further advanced; some are doing this as a hobby, some as an obsession; some have a computer and use the internet or even an on-line tree, some use only pen and paper to achieve their goals. The point is because we each do Genealogy in our own way, there is no one way to do anything. There are only suggestions and tips how to help you on your journey.)*

- 1) When researching ancestors and their families on the various U.S. census records we often encounter "lodgers, boarders, or even laborers" living within the family home. If you overlook reviewing them in more detail you are often making a great mistake. These could very often be family members. They may be siblings living with a married sister and family (where the surname would be different). They might be nieces, nephews, cousins, aunts, uncles; they may even be the in-law living with a family. I find if the surname is the same we are more likely to take a closer look, but if the **surname is different**, we are inclined to just assume that they are just working there. (I have found where a sister was listed as a "servant" with her married siblings family). Keep your eyes open for these extended family members on the various census records. Also, a "boarder" who turned out to be the wife's brother, giving me the mothers maiden surname
- 2) Do you really know your female ancestors' maiden name? That is always one of our bigger challenges in Genealogy; finding her maiden name. But remember it may not be as it seems. Finding her previous name on a marriage - may just be her previously married name. Finding her on a census with her "parents" - may be with her step-father, or step-mother, or both.. Her death certificate may show her "parents" - but was this her adopted parents or foster parents. (Whoever filled out this document, may not have known otherwise.) Newspaper articles may actually list the actual family members - including half-siblings. mother's married name, full siblings. So to prevent "Brick Walls" be sure you have her *correct* maiden name.

### BABY BLUES



Comic shared by Barb HART

**"... We all carry, inside us, people who came before us."**

— Liam CALLANAN, Author

## ASHLAND COUNTY CHAPTER NEWS

### Welcome To Our NEW MEMBERS -

We invite you to submit queries to the newsletter. You may be surprised who else is researching your same family.

- You can start by submitting a copy of your five-generation chart to the Chapter for insertion in our 5-generation book located in the Genealogy room of the Ashland Library.
- Let us know what you would like to see in the newsletter.
- Send in your free query for the year.
  - ◆ New Lifetime members from Westerville, Ohio
  - ◆ James MASON, 219 Wilbur St, Vincennes, Indiana 47591 - Researching MENG, MILLER, LASH, HEIFFNER, FRIEDLINE, BUFFENMEYER, ALTAFFER, HART, SNYDER

### ASHLAND COUNTY CHAPTER LINEAGE SOCIETIES?

Those interested in applying to one of the Ashland County Lineage Societies should complete the application by **August 31, 2023**. Applications are available at the Ashland County Genealogical Society in the Ashland Public Library or at the Ashland County Genealogical Society website. You need not be a member to apply. Application fee of \$15 for all applicants. If you want a copy of the form or have questions or need help, contact our Lineage Chairperson, Marleen APPELEGATE (mragenealogy@gmail.com).

#### Requirement for Lineage Societies follows:

- ◆ **First Families of Ashland County**  
Proving the applicant's ancestors were living in Ashland County prior to 1850, and there is a direct lineage from the ancestor to the applicant.
- ◆ **Settlers and Builders of Ashland County**  
The pioneer ancestor must have been in Ashland County between Jan 1851 and Dec 31, 1870. Again, there must be a direct line from ancestor to the applicant.
- ◆ **Century Families of Ashland County**  
The pioneer ancestor must have been in Ashland County between January 1871 and December 31 one hundred years prior to application year. (*currently, this would be 1923*) Must be a direct line from ancestor to applicant.

**OUR ASHLAND COUNTY GENEALOGY  
VOLUNTEERS ARE THE BEST!  
WE COULDN'T DO IT WITHOUT YOU.  
THANK YOU! THANK YOU! THANK YOU!**



At our Annual Lineage Societies Banquet in November of last year we honored our VOLUNTEERS who have helped support our Chapter and its numerous projects this past year.

You are Truly Appreciated! THANK YOU!

<b>Myron AMSTUTZ</b>	<b>Peg KERR</b>
<b>Deanna APPELEGATE</b>	<b>Rita BONE KOPP</b>
<b>Marleen APPELEGATE</b>	<b>Tom NEEL</b>
<b>Cynthia BECKER</b>	<b>Rebecca PLANK</b>
<b>Linda COLLINS</b>	<b>Barb QUEER</b>
<b>Ginny FEIBER</b>	<b>Barb RENNEKER</b>
<b>Linda FULK</b>	<b>Jane ROLAND</b>
<b>Barb HART</b>	<b>Virginia SCHUCK</b>
<b>Terry HAUN</b>	

### QUERIES:

- ◆ Looking for information on Lake Township churches especially pictures. Contact is: [jonsnyd@mailbox.com](mailto:jonsnyd@mailbox.com)
- ◆ David & Denise HIGHERS is requesting any information on THOMPSON & PLUMMER families in Loudonville area. Contact them at: [denise.k.mortorff@gmail.com](mailto:denise.k.mortorff@gmail.com)
- ◆ James MASON-Looking for parents of Rebecca MILLER, b.20 Feb 1831 Pa; Marr Jacob MENG 24 Sep 1854 Ashland Co, Oh. By 1860 they were in Greene Co, IN. She died 8 Feb 1899; Jacob died 17 Sep 1915; both buried in Webb Cemetery, Gill Twp, Sullivan Co, IN. (contact: James Mason, 219 Wilbur St, Vincennes, IN 47591)

The Pastfinder is the quarterly newsletter of the Ashland County Chapter of the Ohio Genealogical Society and is issued four times a year. The Newsletter is for you, our members. Please submit articles of interest with name of the newspaper, date, and page number. (We always want to see our sources.) Also, your name as contributor is requested. We look forward to hearing from you.

**WE WELCOME suggestions for input in the newsletter: Pastfinder Editor, Terry HAUN (AshOGSeditor@gmail.com)**

## CHAPTER LIBRARY

Located 2nd Floor of Ashland Public Library, (224 Claremont Ave, Ashland, Ohio)

Our Chapter maintains a Genealogy and Local History research room on the mezzanine level at the Ashland Public Library that is open during normal Library hours. This room is maintained jointly by the chapter and the APL Adult Services Department. It contains Family Histories, Local Ashland, Ashland County, and Township history (including churches and schools) as well as Obituary Files, the Chapter's Lineage files, members 5-generation charts and county census records. Additional resources available include Ashland County newspapers on microfilm from 1852 to Dec 2018 and research materials pertaining to other Ohio counties and other States. Donation of books, manuscripts, and research material pertaining to Ashland County and their families are always welcome.

*(Most materials in this collection are not cataloged in the Ashland Public Library System as they are owned by the Chapter.)*



*Ginny FEIBER and Linda FULK keeping the Library current*

### WHAT CAN YOU FIND IN OUR CHAPTER LIBRARY?

Along with our many, many books on almost everything Genealogy-related, and newspaper microfilm, Family Folders, we have two computers which are each connected to microfilm readers that can capture images of a specific newspaper article and send them to a USB Thumb Drive or print them out.

Also one of these computers has an Index called **FAMILY BOOKS INDEX IN THE LIBRARY**. (There are over 600 Family Surname books, binders, or pamphlets on the shelves for you to review).

Another Index we have on the computer is the **ATG OBIT INDEX**. This is a large Excel file which was started many years ago by one of our chapter members. It has been updated yearly adding the previous years obits from the Ashland Times Gazette (ATG). Currently it is updated through 2021 with over 100,800 entries of obits so far. Barb HART has continued this volunteer job recording each obit in the ATG and updating the file yearly as well as forwarding the obituary abstracted information to the RBHayes "Ohio Obituary Index" database on their website ([www.rbhayes.org](http://www.rbhayes.org)). Our Librarian, Ginny FEIBER will continue to keep us posted of many of the other nuggets of history and genealogy you'll find available for you use at the Chapter Library.

### WHAT'S IN THE LIBRARY? (by Ginny FEIBER)

We have a large section of **Family Histories** covering almost half of the left wall of our Research Room amounting to over 600 Genealogies. Some of these books have been written by family members about their ancestors; some are in published bound-books, some in 3-ring binders, journals, and others in pamphlets. There are also several file drawers housing **Family Files**.

Also included is our **5-Generation Chart Binders** which house our Members Charts. This includes the charts and an index of all surnames mentioned. (So if you are a member and have not sent us your 5-generation chart you are missing out on valuable research aids).

A sampling of the surnames are: BITTINGER, BRYTE, BRUBAKER, EWING, FERGUSON, GONGWER, HEWITT, HOAGLAND, KEENER, McKINLEY, MILLER, MYERS, PARRISH, RICE, SHOPBELL, SHRIVERS, WEBBER, and WHISLER.

## 2023 ACCOGS CHAPTER PROGRAMS

(Meetings are the third Tuesday of each month. Schedule is Jan-Feb-Mar meetings are “Virtual Meetings” using “Blue Jeans” as our platform. April - Nov will be at the FREER Home, at 1260 Center St, except the July Picnic. (Please check our Facebook Page for any changes.)

Feb 21: “A Peppy Time with Pep Files” - Lori BERDAK MILLER (Virtual Meeting)

Mar 21: “Family Tree Software Options” - Kelli BERGHEIMER (Virtual Meeting)

Apr 18: “Locating the Living: Resources, Strategies, and Tips” - Lauren KUNTZMAN

May 16: “Hopewell Furnace” - Linda COLLINS

Jun 20: “Community Research Using the National Register of Historic Places and the Historical Marker Database” - Peggy CLEMENS LAURITZEN

Jul 18: **Chapter Potluck Picnic** at Ashland Community Park (behind FREER Home; Begins at 6 PM.)

Aug 15: “Underutilized Court Records” - Cheryl ABERNATHY

Sep 19: “Ethical Dilemmas in Genealogy” - Penny WALTERS (Virtual Meeting)

Oct 17: “How to Protect Yourself From Scams & Theft” - Kelly TREMAINE from Akron BBB

Nov 14: Lineage Banquet “Dinner with President Benjamin HARRISON & First Lady Caroline” - Tom & Caroline BATCHELDER (Chapter Lineage Banquet).

NO December Meeting/Program - HAPPY HOLIDAYS!



## OTHER 2023 PROGRAMS / CONFERENCES

*Always check their websites before making final plans.*

**Mar 2-4, 2023 - ROOTSTECH 2023 (IN-Person and Virtual)** with this year's conference theme: UNITING. Organized by FamilySearch, this renowned family history conference is presented as a hybrid conference for all registered attendees with Learning, Innovation, Inspiration, and Connection. See website for details. [www.familysearch.org/rootstech/home](http://www.familysearch.org/rootstech/home)

**Mar 24-25 NHG Spring 2023 Genealogy Conference & Workshop.** (Hybrid Event) Presented by North Hills Genealogists See <https://northhillsgenealogists.org/> for more information.

**Apr 26-29 - OGS 2023 Conference “What Brought Them Here, 1803-2023”** Presented by Ohio Genealogical Society. held at Kalahari Resort and Convention Center in Sandusky, Ohio Featured speakers: Cari TAPLIN, CG; Michael John NEIL; Michael LACOPO, DVM; Peggy Clemens LAURITZEN, AG, FOGS. Online Registration ends April 14, 2023. Details can be found on their website: [www.ogs.org/2023-conference/](http://www.ogs.org/2023-conference/)

**May 31-Jun 3 - NGS 2023 Family History Conference - “Virginia: The Deep Roots of a Nation”** (In-Person-Virtual Conference hosted by National Genealogical Society) See website for more details: <https://conference.ngsgenealogy.org/>

**Jun 9-11 - International German Genealogy Partnership (IGGP) Conference 2023 “Crossroads and Connections: Find Your Family Story.** In-person & Virtual Conference presented by the Genealogy Center at Allen County Public Library held at the Grand Wayne Conference Center in downtown Fort Wayne, IN. See website for more info: <https://iggp.org/>

**Sep 24 - Ashland Cemetery Walk,** Ashland Cemetery through Ashland County Historical Society. Please check their website for more details. <https://ashlandhistory.org/calendar.html>

**Oct 6-7 - SCGS 53rd Jamboree: Cherishing Your Family Inheritance** (Hybrid Event) See website: [www.scsgenealogy.com](http://www.scsgenealogy.com)

\*\* NOTE: Check [conferencekeeper.org](http://conferencekeeper.org), a website that states on their website “*the most complete collection of Genealogy events online*”. If you are interested in a program that isn't mentioned, check their site.

### CHAPTER PUBLICATIONS:

Our Ashland County Chapter has many published Ashland County research aid books for sale. Visit our website, <https://ashlandccogs.org/publications/publications-order-form/> for descriptions of them. You can order online, or print the order form and mail to the address shown.

# THE PASTFINDER

QUARTERLY NEWSLETTER OF THE ASHLAND  
COUNTY CHAPTER, OHIO GENEALOGICAL SOCIETY

Ashland County Chapter  
Ohio Genealogical Society  
PO Box 681  
Ashland OH 44805-0681

POSTAGE  
HERE

RETURN SERVICE REQUESTED

Mailing Label

## Ashland County Chapter of OGS Lineage Societies

Ashland County Lineage Society applications can be printed out from our web site. Go to the ASHLAND CHAPTER link of our website. **August 31 is the yearly deadline for induction.** See Marleen APPEGATE, Lineage Chair for questions

- ◆ **First Families of Ashland County** (FFOAC). Pioneer ancestor must have been in Ashland County prior to 1850.
- ◆ **Settler's & Builders of Ashland Co, OH** (SBOAC). Pioneer ancestor must have been in Ashland County between January 1851 and December 31, 1870.
- ◆ **Century Families** (CFOAC). Pioneer ancestor must have been in Ashland County between January 1871 and December 31 one hundred years prior to application year.

### Newsletter Mailing

Jane ROLAND / Barb QUEER

## Chapter Membership

Ashland Chapter OGS Membership  
\$5-Student; \$15.00-Single;  
\$20.00-Family (one address)  
Life—\$150.00 (S) or \$225.00 (F)

Send to **Linda FULK, Treasurer**  
P.O. Box 681, Ashland, Ohio 44805  
Membership year is January -December

See our website for an Application Form  
<https://ashlandccogs.org/membership/membership-form/>

## Chapter Meetings

The Ashland County Chapter of the Ohio Genealogical Society meets the **third Tuesday of each month at 6:30 pm.**

Program at 6:30 pm with Chapter business meeting immediately following. Chapter meets all months except July (annual Picnic), November (Fall Banquet, reservations only), and no meeting in December.

All meetings are free and open to the public.

## Chapter Library

Located 2nd Floor Ashland Public Library  
(224 Claremont Ave, Ashland, Ohio 44805)

## Volunteers

(Ginny FEIBER - Library Coordinator)  
(Linda FULK - Library Assistant)

Ginny FEIBER; [vfeiber@zoominternet.net](mailto:vfeiber@zoominternet.net)

Ashland County  
Chapter OGS website

<http://ashlandccogs.org>

## Meeting Cancellations

**Meeting will be cancelled if schools are closed due to inclement weather.**

**For other types of cancellations, check our Facebook page or listen to WNCO or WMFD.**



Like us on Facebook

## FIND US ON THE INTERNET:

Our Chapter Website: <http://ashlandccogs.org>  
Facebook: [www.facebook.com/AshlandGenSoc](http://www.facebook.com/AshlandGenSoc)

**CHAPTER CONTACTS:** Corres.Secretary: [ACOGSSEC@gmail.com](mailto:ACOGSSEC@gmail.com) (OR) Newsletter: [AshOGSeditor@gmail.com](mailto:AshOGSeditor@gmail.com)

*The Ashland County Chapter OGS is a non-profit 501(c)3 organization; donations to the Society are tax deductible. Your gifts help us buy books for the library, acquire speakers for our programs, and provide the means to publish our books. Consider a gift above and beyond your annual membership to help preserve the records left by our Ashland County pioneers.*